



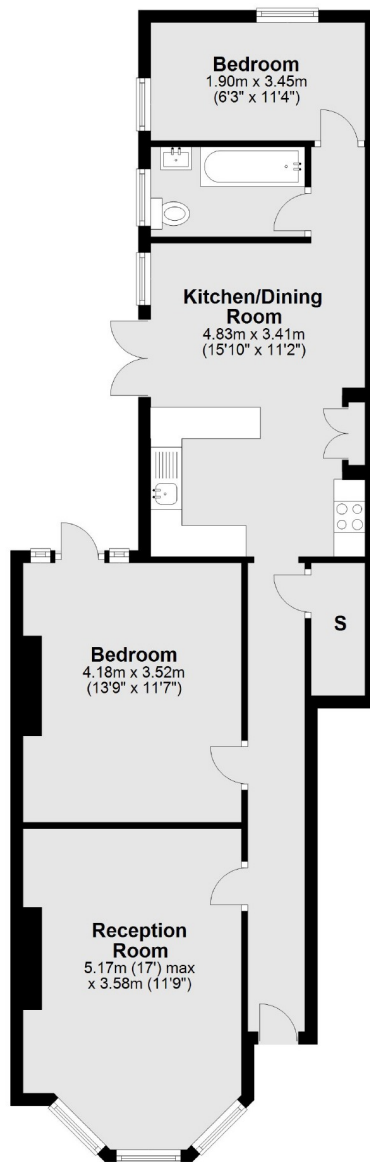
Salford Road, SW2

£630,000

A two bedroom, ground floor Victorian conversion flat situated in Telford Park. The property also comprises a separate reception room, a spacious eat-in kitchen and a private garden.

- Two Bedrooms
- Private Garden
- Victorian Conversion
- Telford Park
- Eat-in Kitchen
- Separate Reception Room

Ground Floor



Total area: approx. 71.6 sq. metres (771.0 sq. feet)

Jacksons Balham
8-11 Balham Station Road
London
SW12 9SG
020 8675 6565
balham.sales@jacksonsestateagents.com

Energy Rating: D We aim to make our particulars both accurate and reliable. However they are not guaranteed; nor do they form part of an offer or contract. If you require clarification on any points then please contact us, especially if you're traveling some distance to view. Please note that appliances and heating systems have not been tested and therefore no warranties can be given as to their good working order.