



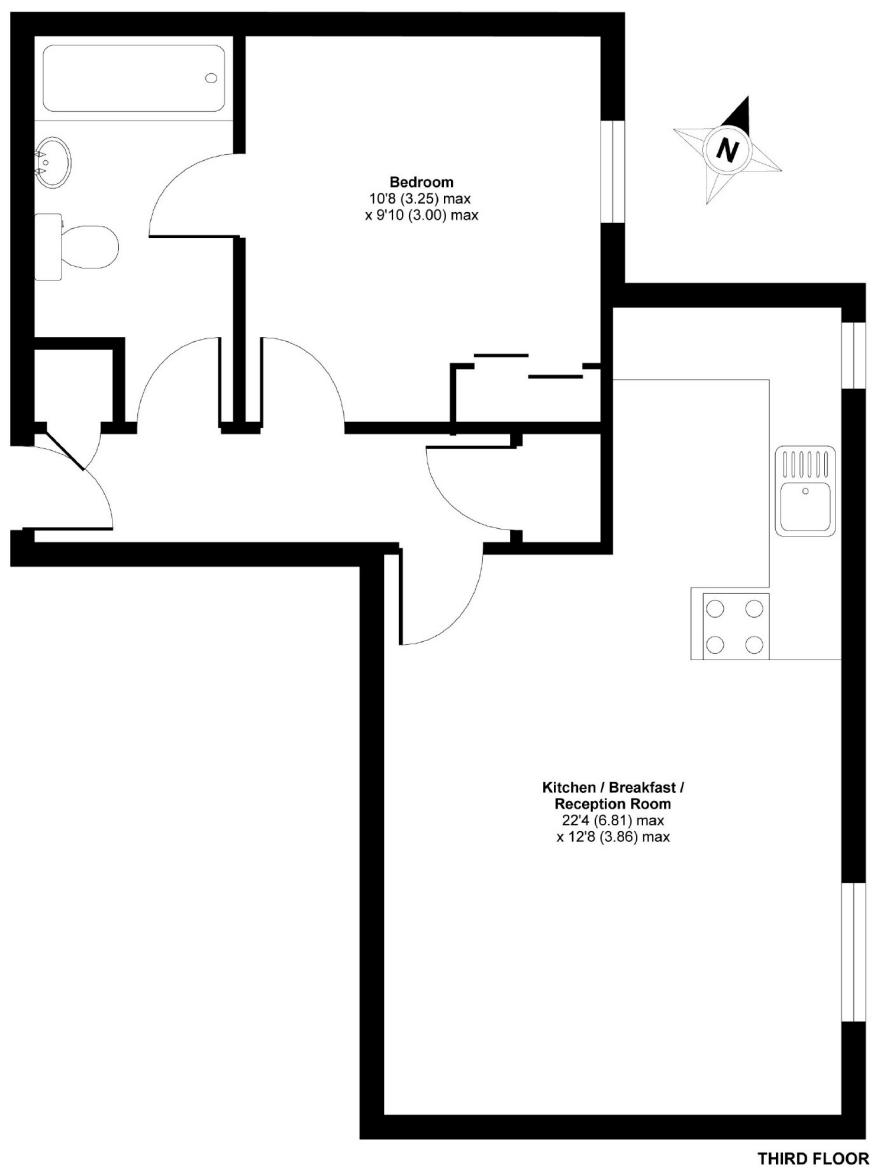
Eltringham Street, SW18

£1,400 PCM

One bedroom apartment set within the gated development of Charterhouse Apartments, Eltringham Street.

- One Double Bedroom
- Modern Kitchen
- Modern Bathroom
- Communal Roof Terrace
- Furnished
- Lift

For further information on the costs associated with renting a property, please pop into our office or visit our website.



APPROX. GROSS INTERNAL FLOOR AREA 463 SQFT / 43 SQM

Charterhouse Works, Eltringham Street, London, SW18

Copyright nichecom.co.uk 2010 Produced for Jacksons the Independent Estate Agents REF : 67572

Jacksons Wandsworth
507 Old York Road
London
SW18 1TF
020 8875 8899
wandsworth.lettings@jacksonsestateagents.com

Energy Rating: B We aim to make our particulars both accurate and reliable. However they are not guaranteed; nor do they form part of an offer or contract. If you require clarification on any points then please contact us, especially if you're traveling some distance to view. Please note that appliances and heating systems have not been tested and therefore no warranties can be given as to their good working order.