



## Brudenell Road, SW17

**£1,050,000**

An immaculate four bedroom family home with a private south facing garden on a popular residential road near Tooting Bec Station and the common.

- Freehold Family Home
- Four Bedrooms
- Two Bathrooms
- Private South Facing Garden
- Tooting Bec Common
- Fully Renovated and Extended



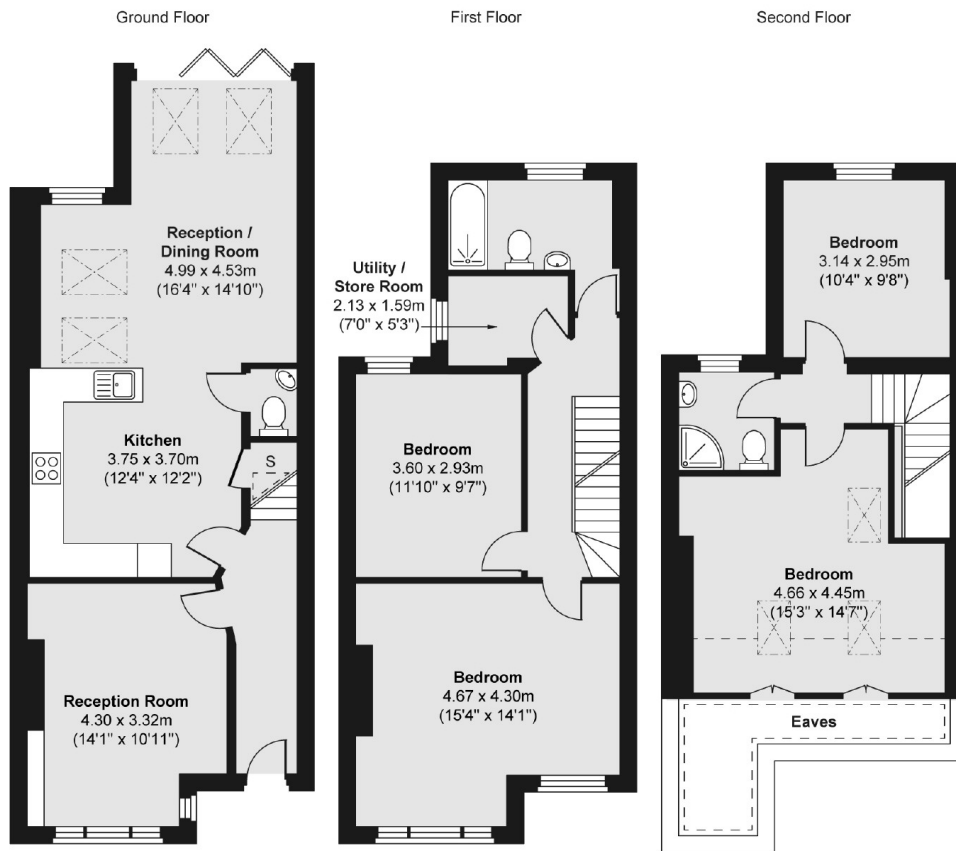
This stunning family home has been fully extended and tastefully decorated throughout. On the ground floor there is a separate reception room to the front with an open plan double reception room and kitchen to the rear with bifolding doors leading out to a private south facing garden. The first floor consists of two double bedrooms, a contemporary bathroom and a separate utility/store room. The loft has been fully converted to create two large bedrooms with an additional shower room. The property benefits from having ample storage throughout and a downstairs cloakroom.

Brudenell Road runs between Upper Tooting Road and Franciscan Road and is one of the most popular roads in Tooting. The property is ideally situated for Tooting Bec Underground station. The green open spaces of both Tooting Bec Common and Wandsworth Common are easily accessible as are the shops, bars and restaurants that both of these areas have to offer.









Total area (approx.) 138.11 sq. m (1,487 sq. ft)

Jacksons Tooting  
26 Tooting Bec Road  
London  
SW17 8BD  
020 8767 0522  
tooting.sales@jacksonsestateagents.com

Energy Rating: C We aim to make our particulars both accurate and reliable. However they are not guaranteed; nor do they form part of an offer or contract. If you require clarification on any points then please contact us, especially if you're traveling some distance to view. Please note that appliances and heating systems have not been tested and therefore no warranties can be given as to their good working order.