



## Almond Avenue, W5

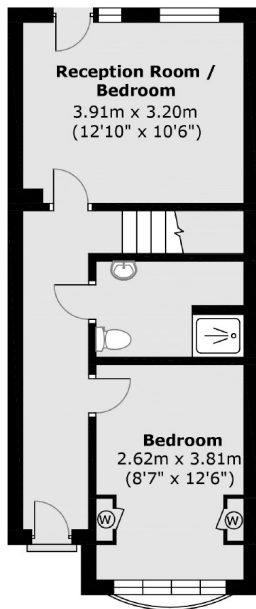
£646 pw (£2800 pcm)

This four bedroom townhouse is arranged over three floors. There are two bathrooms, a separate downstairs WC, a spacious reception room, and off street parking. The property is newly decorated and being so close to transport links, is perfect for a professional family or sharers.

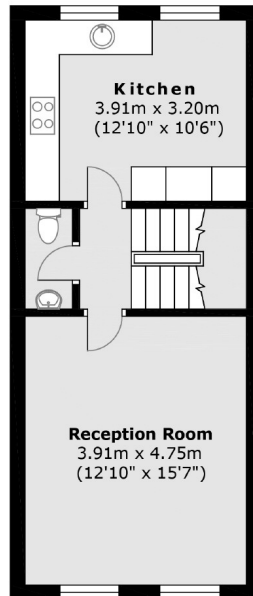
Almond Avenue is just over 0.5 mile from South Ealing Piccadilly line station, and just over 1 mile from Ealing Broadway with it's transport links and amenities.

- South Ealing • Town House • Two Bathrooms •
- Downstairs WC • Off Street Parking • Private Garden •

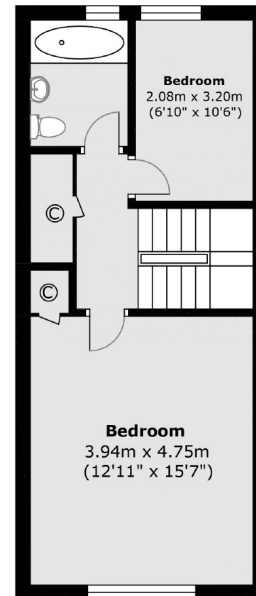
Ground Floor



First Floor



Second Floor



Main area: Approx. 115.7 sq. meters (1,245.9 sq. fe

Robertson Smith & Kempson Ealing Lettings  
1 The Broadway, London, W5  
2NT  
020 8840 7885  
ealinglettings@robertsonsmithandkempson.co.uk

Energy Rating: E. We aim to make our particulars both accurate and reliable. However they are not guaranteed; nor do they form part of an offer or contract. If you require clarification on any points then please contact us, especially if you're traveling some distance to view. Please note that appliances and heating systems have not been tested and therefore no warranties can be given as to their good working order.