



LOVETT
Sales & Lettings

£150,000



32B Market Square, St. Neots, Cambridgeshire, PE19 2AF

- SPACIOUS SECOND FLOOR APARTMENT
- TOWN CENTRE LOCATION
- SECURE GATED DEVELOPMENT
- GAS RADIATOR HEATING
- ONE BEDROOM
- GRADE II LISTED BUILDING

Full Description

A SPACIOUS one bedroom second floor apartment in a Grade II listed building in the TOWN CENTRE of St Neots overlooking the Market Square. The accommodation comprises entrance hall, living/dining room, kitchen, bedroom and a bathroom. The property benefits from gas radiator central heating and secure gated access. There is a long lease with approx. 979 years remaining. No forward chain.

COMMUNAL ENTRANCE

Stairs to second floor.

ENTRANCE HALL

Hardwood door into hallway. Carpeted, sash window to rear, radiator.

BEDROOM

12' 3" x 11' 1" (3.73m x 3.38m)

Single glazed sash window to front. Radiator.

LIVING / DINING ROOM

16' 1" x 16' 1" (4.9m x 4.9m)

Sash windows to front. Radiator. Laminate flooring. Steps leading to kitchen area.

KITCHEN

13' 0" x 7' 6" (3.96m x 2.29m)

Single glazed wooden window, radiator, Fitted kitchen with wall and base units with tiled splash back, one and a half bowl sink with mixer tap, over hob extractor, integrated gas oven and hob, Gas boiler, space for dishwasher, washing machine and fridge freezer. Window to side.

BATHROOM

Skylight window. Low-level WC, wash hand basin and bath with shower over. Glass shower screen. Part tiled. Extractor fan. Heated towel rail.

LEASEHOLD INFORMATION

There is approx. 979 years remaining on the lease.

The service charge is approx. £1529 per year

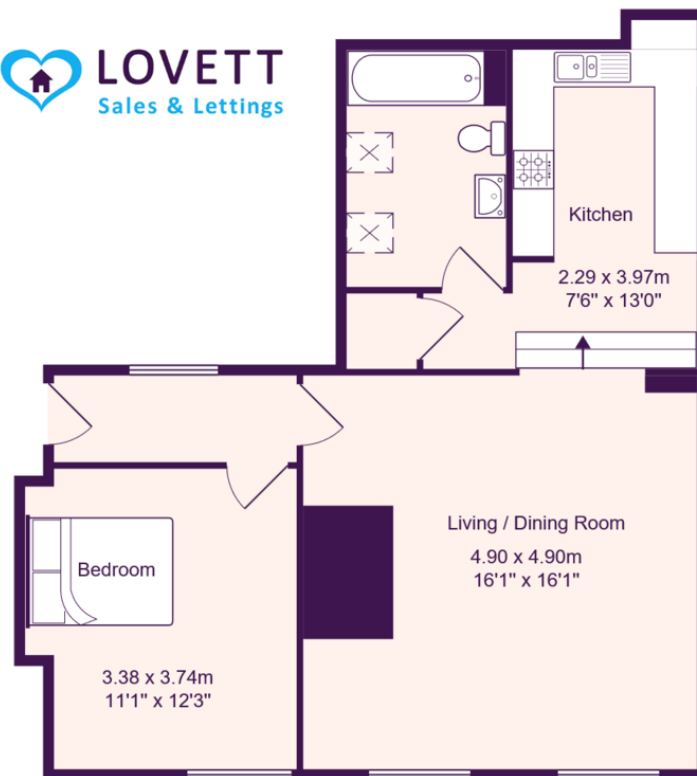
The annual buildings insurance is approx. £353

PARKING

There is no allocated parking space for this property, however, permit parking is available in town centre long stay car parks.







Total Area: 57.9 m² ... 623 ft²

All measurements are approximate and for display purposes only

EPC GRAPH
%epcGraph_c_1_250%