

# FLETCHERS

ESTATE AGENTS



## Acton Lane, W4

£479,950

Approached via its own private entrance, a very light and airy first floor two bedroom apartment in this great residential enclave, just a 10 minute walk from Chiswick High Road. The living room and kitchen are bathed in light from three sash windows and there are two double bedrooms with a large loft with potential to convert. The roof and windows have both been upgraded and the property is available chain free with a share in the freehold.

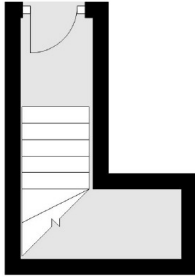
Chiswick Park Overground station is only 650m, with Turnham Green station just beyond at 950m. The fabulous range of shops, boutiques and restaurants on Chiswick High Road are easily reached via Chiswick Common.

- Two Double Bedrooms • Reception Room • Kitchen • Private Entrance • Share Of Freehold • Potential To Extend (STPP) •

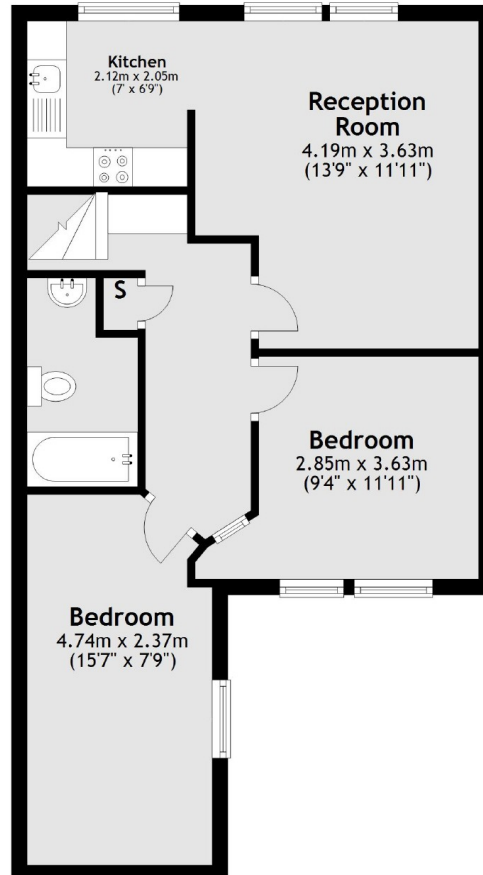
# FLETCHERS

ESTATE AGENTS

Ground Floor



First Floor



Total area: approx. 53.8 sq. metres (579.4 sq. feet)

Fletchers Chiswick Turnham Green Sales  
58 Turnham Green Terrace, London, W4 1QP  
020 8987 3000  
chiswicksales@fletcherestates.com

Energy Rating: C. We aim to make our particulars both accurate and reliable. However they are not guaranteed; nor do they form part of an offer or contract. If you require clarification on any points then please contact us, especially if you're traveling some distance to view. Please note that appliances and heating systems have not been tested and therefore no warranties can be given as to their good working order.