



## Cranford Lane | Hounslow | TW5 9EP

£649,950

Rarely available on this corner plot comes this wonderful three bedroom detached family home, positioned walking distance to all amenities and offering great potential to be extended. The property has been very well maintained by its current owners and briefly consists of three reception rooms, a delightful kitchen, an upstairs three piece bathroom suite, a wide and very well kept rear garden. Ideal for a first or next time buyer, the property boasts spacious living features throughout and has further scope to be extended to the rear (subject to planning). Viewings are highly recommended, please contact us for further information.

## Tenure

Freehold

## Council Tax Band

E

## Viewing Arrangements

Strictly by appointment

## Contact Details

10 Central Parade

New Heston Road

Heston

Middlesex

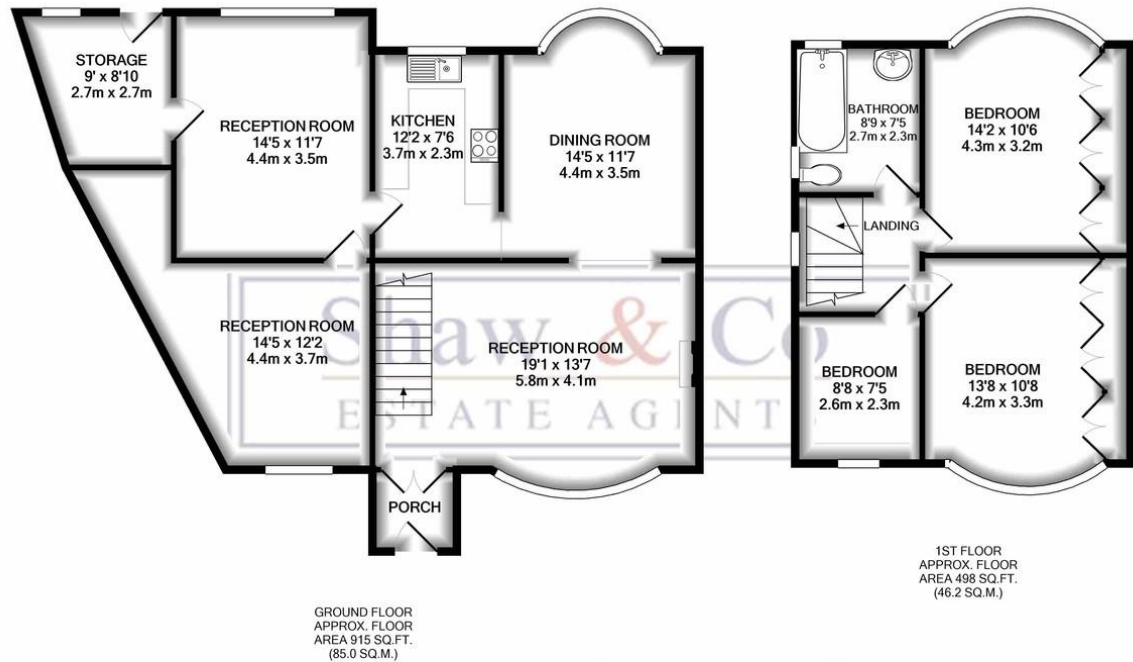
TW5 0LH

020 8570 7258

heston@shawandcoestates.com

www.shawandcoestates.com

**Shaw & Co**  
ESTATE AGENTS



TOTAL APPROX. FLOOR AREA 1413 SQ.FT. (131.3 SQ.M.)

Whilst every attempt has been made to ensure the accuracy of the floor plan contained here, measurements of doors, windows, rooms and any other items are approximate and no responsibility is taken for any error, omission, or mis-statement. This plan is for illustrative purposes only and should be used as such by any prospective purchaser. The services, systems and appliances shown have not been tested and no guarantee as to their operability or efficiency can be given  
Made with Metropix ©2021

%epcGraph\_c\_1\_349%

Agents Note: Whilst every care has been taken to prepare these particulars, they are for guidance purposes only. All measurements are approximate and for general guidance purposes only and whilst every care has been taken to ensure their accuracy, they should not be relied upon and potential buyers/tenants are advised to recheck the measurements