

FLETCHERS

ESTATE AGENTS



Charlotte Court, W6

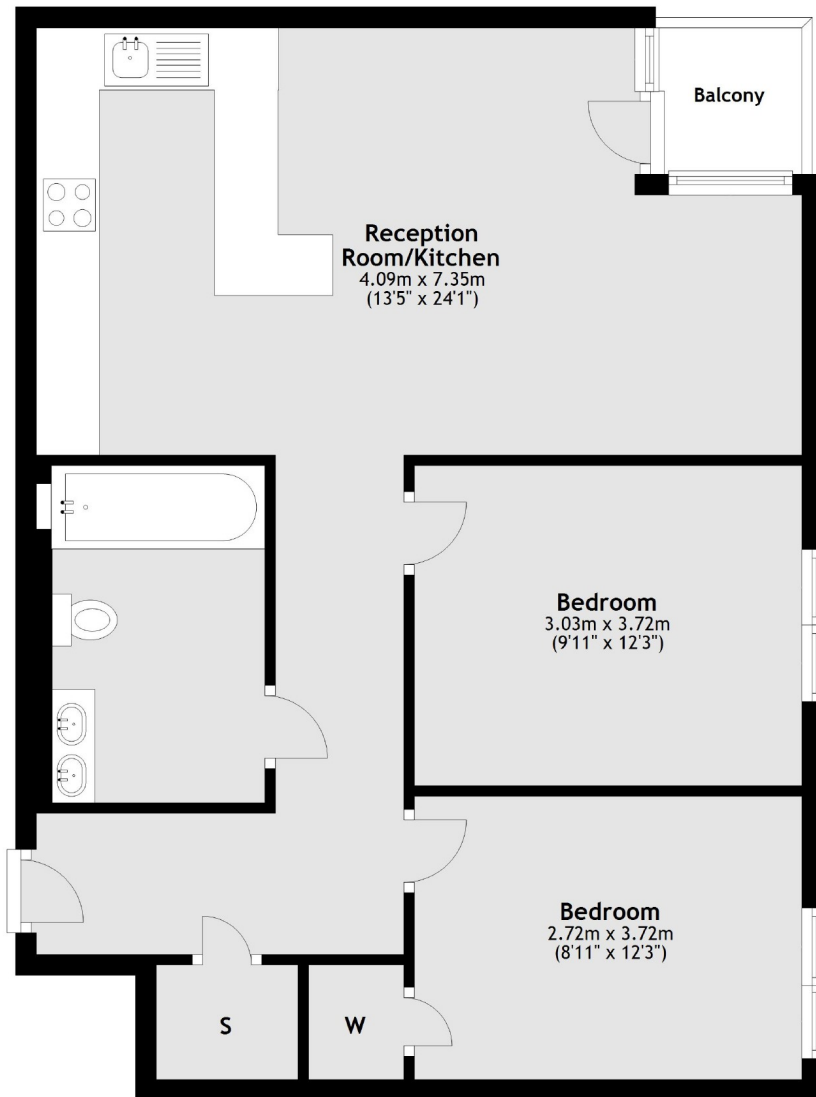
£256,000

A modern and secure second floor two bedroom apartment with a modern open-plan kitchen and living area and a private balcony. There is also off-street parking, entry phone system and lift access. SHARED OWNERSHIP - Terms and Conditions apply

The apartment is in a great position moments from Stamford Brook station, with the wonderful selection of independent retailers, restaurants and boutiques on Chiswick High Road just around the corner.

- Shared Ownership • Two Double Bedrooms • Open-Plan • Balcony • Off Street Parking • Lift •

Second Floor



Main area: Approx. 70.3 sq. metres (757.0 sq. feet)
Plus balconies, approx. 2.3 sq. metres (24.4 sq. feet)

Fletchers Chiswick Turnham Green Sales
58 Turnham Green Terrace, London, W4 1QP
020 8987 3000
chiswicksales@fletcherestates.com

Energy Rating: B. We aim to make our particulars both accurate and reliable. However they are not guaranteed; nor do they form part of an offer or contract. If you require clarification on any points then please contact us, especially if you're traveling some distance to view. Please note that appliances and heating systems have not been tested and therefore no warranties can be given as to their good working order.