

FLETCHERS

ESTATE AGENTS



Ennismore Avenue, W4

£650,000

This centrally located apartment takes up the top two floors of an attractive house. The open plan kitchen/ reception room benefits from three large windows. Two bedrooms are accompanied by an en-suite and family bathroom.

In a quiet residential road running just off Chiswick High Road providing easy access to shopping, restaurants and the Riverside, as well as both Turnham Green and Stamford Brook Underground Stations.

- Two Bedrooms • Two Bathrooms • Good Condition • Split Level • Share of Freehold • Central Location •

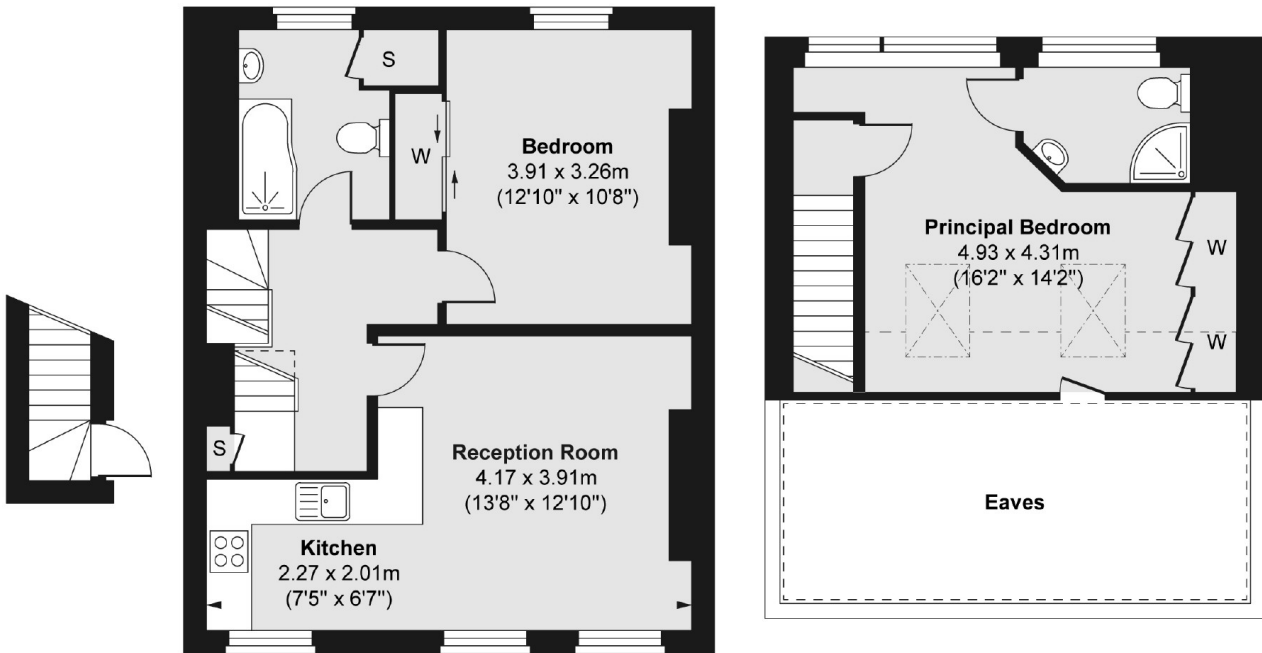
FLETCHERS

ESTATE AGENTS

First Floor

Second Floor

Third Floor



Total area (approx.) 76.24 sq. m (821 sq. ft)

Fletchers Chiswick Turnham Green Sales
58 Turnham Green Terrace, London, W4 1QP
020 8987 3000
chiswicksales@fletcherestates.com

Energy Rating: D. We aim to make our particulars both accurate and reliable. However they are not guaranteed; nor do they form part of an offer or contract. If you require clarification on any points then please contact us, especially if you're traveling some distance to view. Please note that appliances and heating systems have not been tested and therefore no warranties can be given as to their good working order.