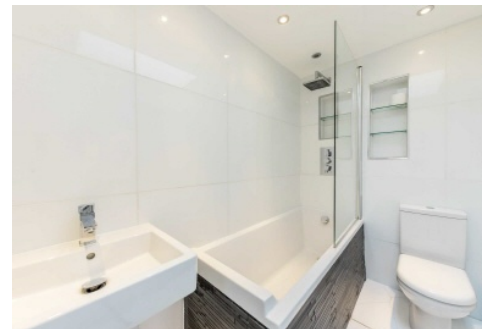


SNELLERS

ESTATE AGENTS



Fairlawns, TW1

£3,200 PCM

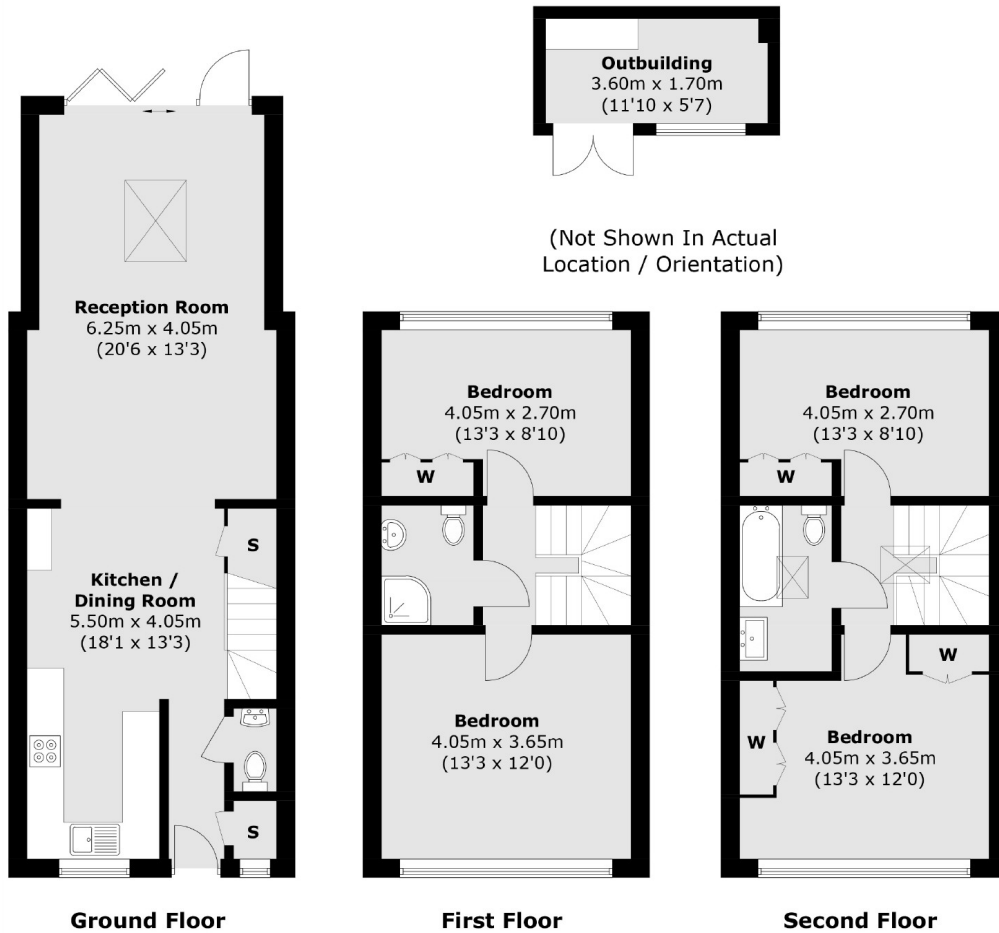
Within the sought after Cambridge Park area, this four bedroom family home has an open-plan kitchen/living area with bi-fold doors leading to the private garden, four double bedrooms and two bathrooms. There is also off-street parking for two cars.

Ideally located just a short walk from St Margarets Village for a number of local shops and cafes, the tow paths of the river Thames and Richmond town centre.

- Four Double Bedrooms • Two Bathrooms • Open-Plan Living •
- Wooden Flooring • Great Location • Off-Street Parking •

SNELLERS

ESTATE AGENTS



Total area (approx.): 117.8 sq. m (1,267.8 sq. ft)
Outbuilding : 6.1 sq. m (65.6 sq. ft)

Snellers St. Margarets Lettings
36 Crown Road
St Margarets
TW1 3EH
020 8892 0700
stmargaretslettings@snellers.co.uk

Energy Rating: C We aim to make our particulars both accurate and reliable. However they are not guaranteed; nor do they form part of an offer or contract. If you require clarification on any points then please contact us, especially if you're traveling some distance to view. Please note that appliances and heating systems have not been tested and therefore no warranties can be given as to their good working order