



St. Margarets Road, W7

£550,000

Extended house in Olde Hanwell with through lounge, kitchen, dining room, bathroom, two bedrooms and loft room. Outside has front and landscaped south-west facing rear garden with summer house.

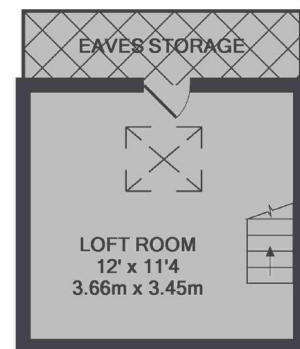
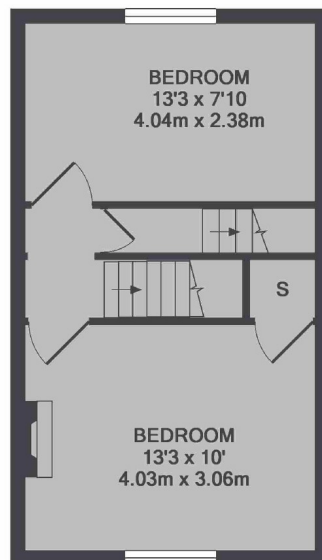
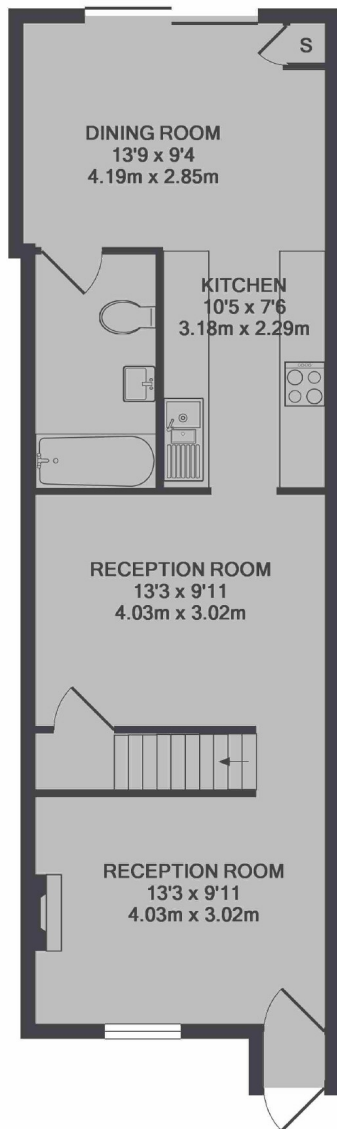


Extended house comprising through lounge, kitchen, dining room, bathroom, first floor two bedrooms, stairs to loft room. The property also has front and landscaped south - west facing rear garden with summer house.

Located with access to Grand Union canal, the Fox pub, Boston Manor tube, Hanwell mainline station (Crossrail link) and within St Marks school catchment.

- Secluded Garden • Extended Property • Summer House •
- Close To Hanwell Locks • St Marks School Catchment • Good Transport Links •





TOTAL APPROX. FLOOR AREA 1044 SQ.FT. (97.0 SQ.M.)

Robertson Smith & Kempson Hanwell Sales
69 Greenford Avenue,
London, W7 1LL
020 8566 2339
hanwellsales@robertsonsmithandkempson.co.uk

Energy Rating: E. We aim to make our particulars both accurate and reliable. However they are not guaranteed; nor do they form part of an offer or contract. If you require clarification on any points then please contact us, especially if you're traveling some distance to view. Please note that appliances and heating systems have not been tested and therefore no warranties can be given as to their good working order.