

FLETCHERS

ESTATE AGENTS



Acton Lane, W3

£550,000

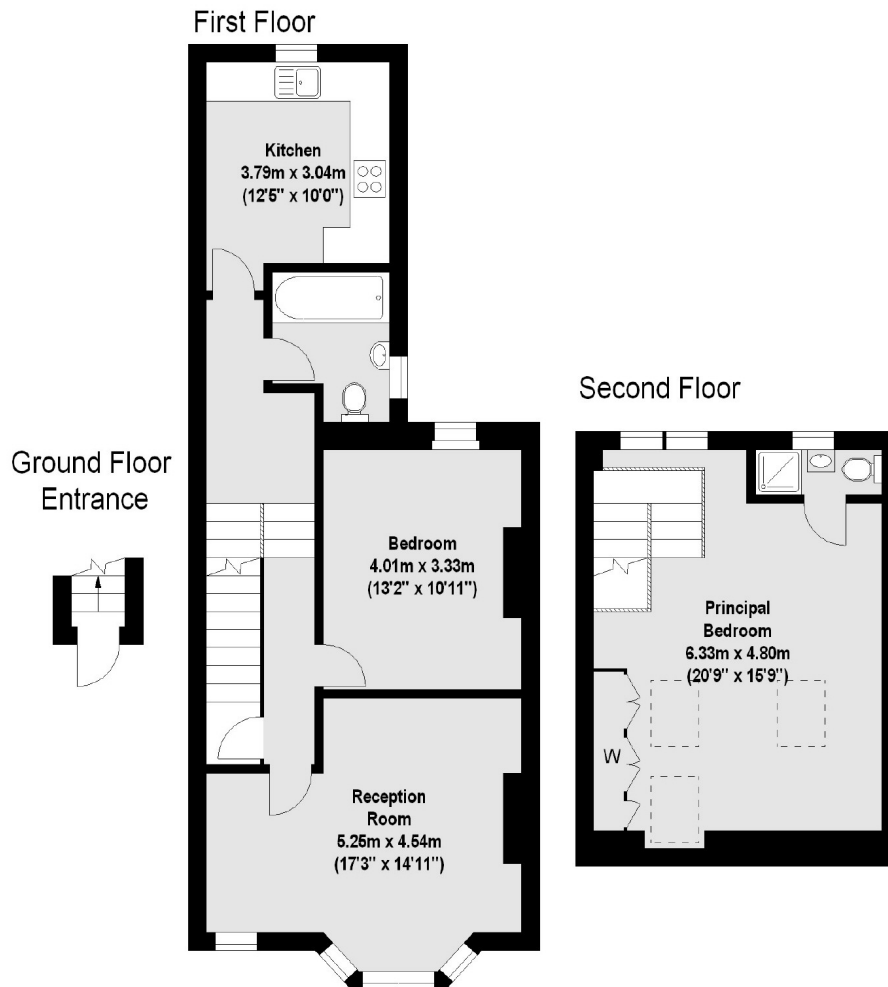
On the top two floors of this pretty bay fronted Victorian house, a good sized split level apartment with great entertaining areas and a sizeable top floor principal bedroom with an en suite shower.

There is easy access to two stations at South Acton and Acton Central, and a great range of local shopping facilities at Acton High Street, or the wide selection of independent retailers and restaurants on Chiswick High Road and Turnham Green Terrace. For sale CHAIN FREE.

- Two Double Bedrooms • Bathroom and E/S Shower • Reception Room • Kitchen/Diner • Split Level • Chain Free •

FLETCHERS

ESTATE AGENTS



Total area (approx.): 94.85 sq. m (1021 sq. ft)

Fletchers Chiswick Turnham Green Sales
58 Turnham Green Terrace, London, W4 1QP
020 8987 3000
chiswicksales@fletcherestates.com

Energy Rating: D. We aim to make our particulars both accurate and reliable. However they are not guaranteed; nor do they form part of an offer or contract. If you require clarification on any points then please contact us, especially if you're traveling some distance to view. Please note that appliances and heating systems have not been tested and therefore no warranties can be given as to their good working order.