

TATES

Residential Sales & Lettings



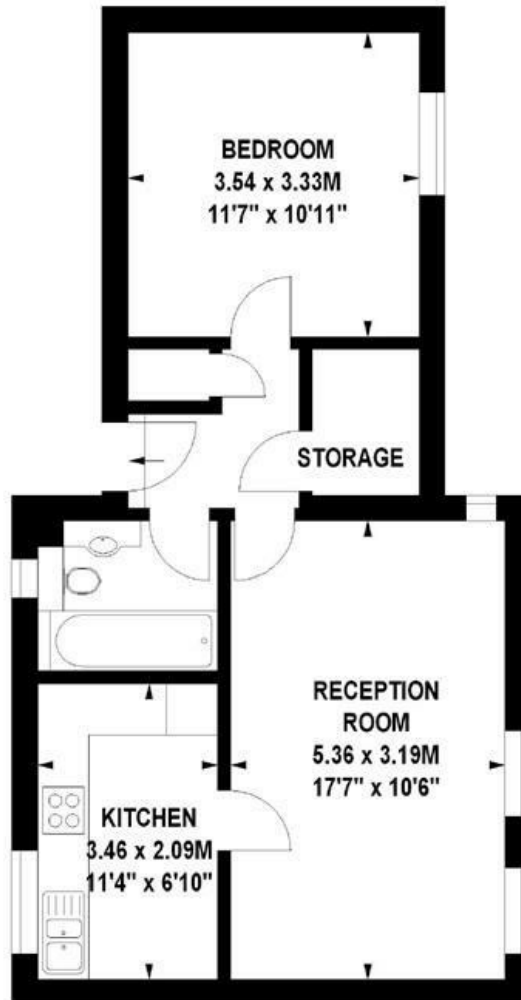
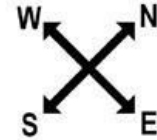
More Close, St Paul's Court, London W14 9BN
£350 Per week

- One double bedroom apartment
- Heating & hot water inclusive
- Large storage cupboard
- Easy access to the A4
- Gated development
- Close to Barons Court tube station
- Communal gardens
- Energy Efficiency Rating Current Band: C

More Close, St. Pauls Court, W14

Approximate gross internal area

48 sq m / 517 sq ft



Top Floor

Illustration for identification purposes only, not to scale

All measurements are maximum, and includes wardrobes and window bays where applicable

Prepared by Mays Floorplans © . Tel 020 7381 4975

Whilst these particulars are believed to be correct, no guarantee can be given for the measurements, appliances or services. It is our recommendation that all are tested. These are not intended to form part of any contract. Tate's accept no responsibility for their accuracy.

Energy Efficiency Rating		
	Current	Potential
Very energy efficient - lower running costs		
(92 plus) A		
(81-91) B		
(69-80) C	69	71
(55-68) D		
(39-54) E		
(21-38) F		
(1-20) G		
Not energy efficient - higher running costs		
England & Wales <small>EU Directive 2002/91/EC</small>		

135 Hammersmith Rd London W14 0QL

T. 020 7602 6020 F. 020 7602 9522

mail@tatesestates.co.uk

tatesestates.co.uk

Tates (Agents) Ltd. Registered in England and Wales No. 2356337

Registered Office: 4th Floor Imperial House, 15 Kingsway London WC2B 6U

