

# FLETCHERS

ESTATE AGENTS



## Charlotte Court, W6

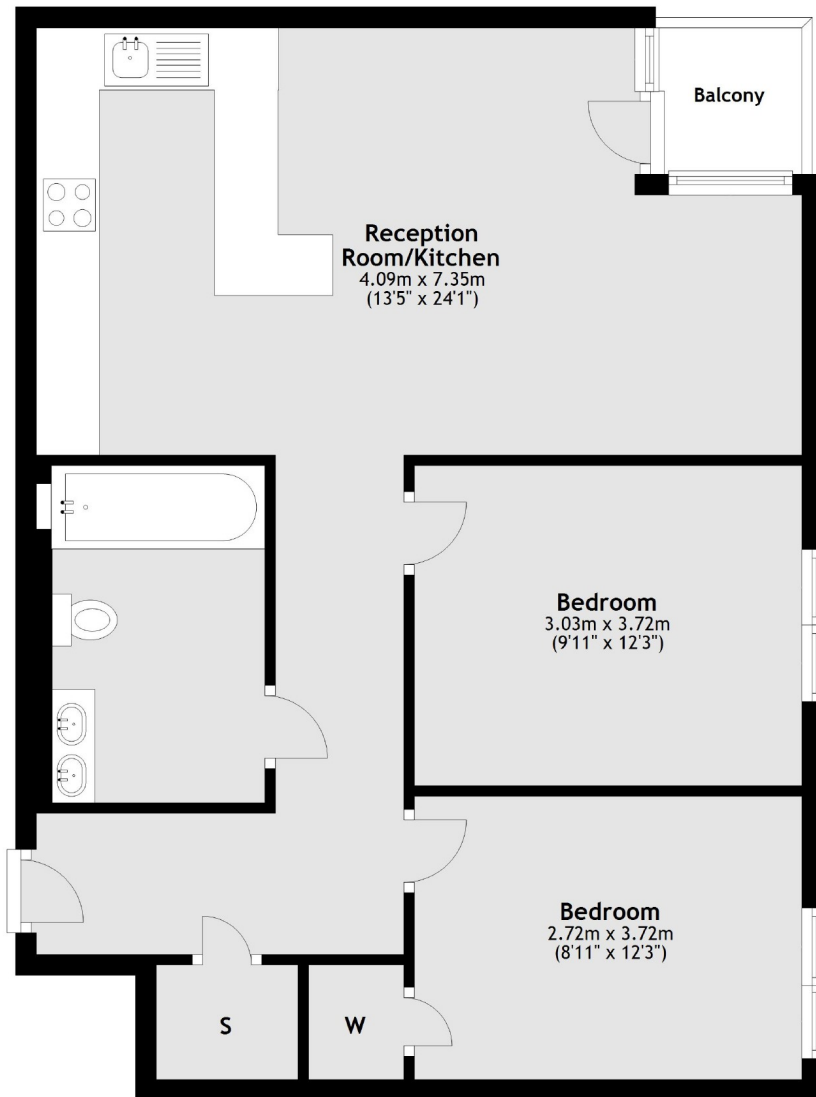
£640,000

In this calm courtyard development just off Goldhawk Road, a modern and stylish second floor two bedroom apartment. The apartment features a great living area with a modern open plan kitchen and direct access to a private balcony. This secure block has reserved off street parking, entry phone and lift access.

The apartment is in a great position moments from Stamford Brook station, with the wonderful selection of independent retailers, restaurants and boutiques on Chiswick High Road just around the corner.

- Two Double Bedrooms • Bathroom • Large Reception Room • Fitted Open Plan Kitchen • Balcony • Passenger Lift • Off Street Parking •

## Second Floor



**Main area: Approx. 70.3 sq. metres (757.0 sq. feet)**  
Plus balconies, approx. 2.3 sq. metres (24.4 sq. feet)

Fletchers Chiswick Turnham Green Sales  
58 Turnham Green Terrace, London, W4 1QP  
020 8987 3000  
[chiswicksales@fletcherestates.com](mailto:chiswicksales@fletcherestates.com)

Energy Rating: B. We aim to make our particulars both accurate and reliable. However they are not guaranteed; nor do they form part of an offer or contract. If you require clarification on any points then please contact us, especially if you're traveling some distance to view. Please note that appliances and heating systems have not been tested and therefore no warranties can be given as to their good working order.