



127 May Close  
Swindon, SN2 1XA





127 May Close, Swindon, SN2 1XA

**\*\*AN IDEAL FIRST TIME/INVESTMENT  
PURCHASE ERV £750 PCM\*\*NEWLY FITTED  
KITCHEN\*\*TWO DOUBLE  
BEDROOMS\*\*GARAGE\*\*** Situated at the head of a  
CUL-DE-SAC this immaculate property benefits  
from a **GOOD SIZE SITTING / DINING ROOM** and  
**NON-OVERLOOKED GARDEN.**

- Mid Terrace
- Two double bedrooms
- Built in Wardrobes
- Sitting / Dining Room
- New Modern Fitted Kitchen
- Pretty rear garden
- Single Garage
- Driveway parking
- New UPVC double glazed windows to front
- New UPVC front door

£180,000



### Description

**\*\*AN IDEAL FIRST TIME/INVESTMENT PURCHASE  
ERV £750 PCM\*\*NEWLY FITTED KITCHEN\*\*TWO  
DOUBLE BEDROOMS\*\*GARAGE\*\*** Situated at the head of  
a CUL-DE-SAC this immaculate property benefits from a  
GOOD SIZE SITTING / DINING ROOM and NON-  
OVERLOOKED GARDEN.

### Situation

Swindon is situated at the centre of the M4 corridor, midway  
between the important commercial areas of Reading and  
Bristol. The M5 is also accessible via the A419 to the north of  
the town. Served by excellent public transport links including a  
train station that offers frequent journeys to Reading, Bristol  
and London Paddington, Swindon is an ideal choice for  
commuters.

### Property Information

Tenure : Freehold

Gas Central Heating

Council Tax Band : B

EPC : C

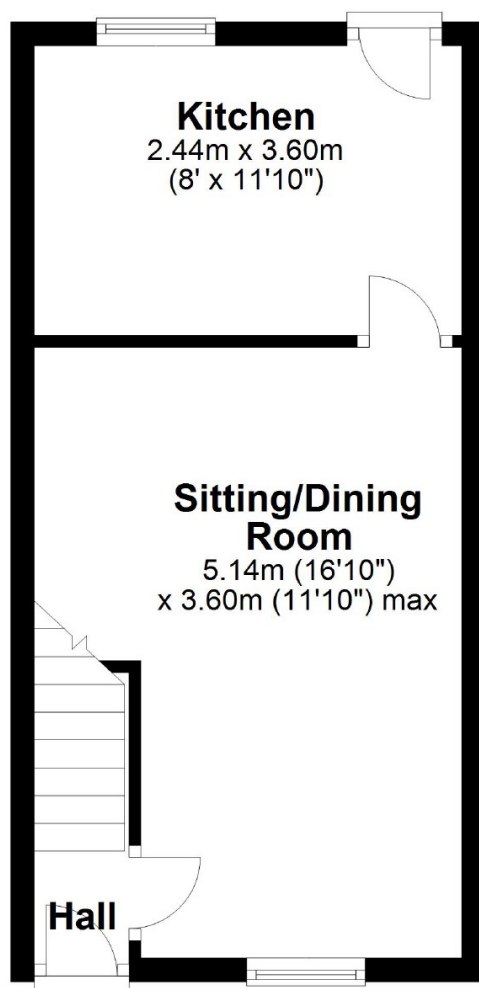


These particulars, whilst believed to be accurate are set out as a general outline only for guidance and do not constitute any part of an offer or contract. Intending purchasers should not rely on them as statements of representations of fact, but must satisfy themselves by inspection or otherwise as to their accuracy. No person in this firm's employment has the authority to make or give any representation or warranty in respect of the property. All measurements and distances are approximate only.

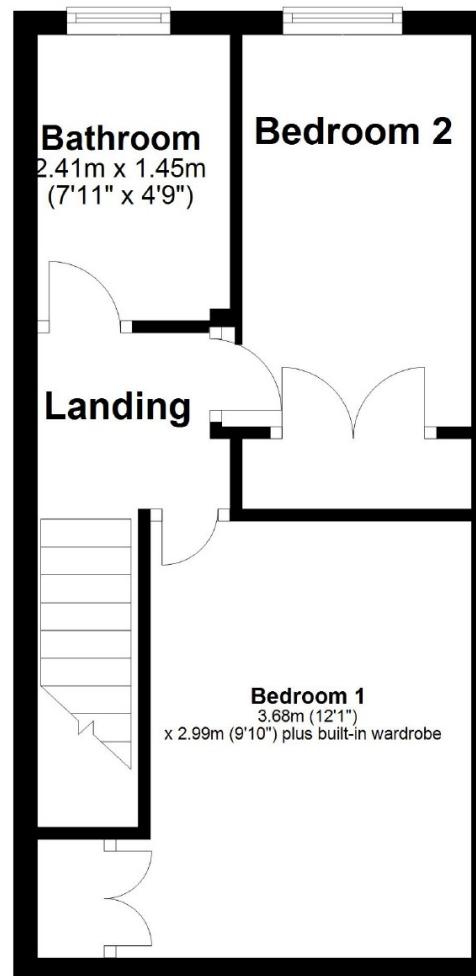




## Ground Floor



## First Floor



Unit B, Millgrove House, 59 Millgrove Street, Redhouse, Swindon,  
Wiltshire, SN25 2FW  
Tel: 01793 683144  
Fax:

[www.strakers.co.uk](http://www.strakers.co.uk)

■ Chippenham  
■ Corsham

■ New Homes  
■ Malmesbury

■ Swindon  
■ Devizes

■ Auction  
■ Lettings