



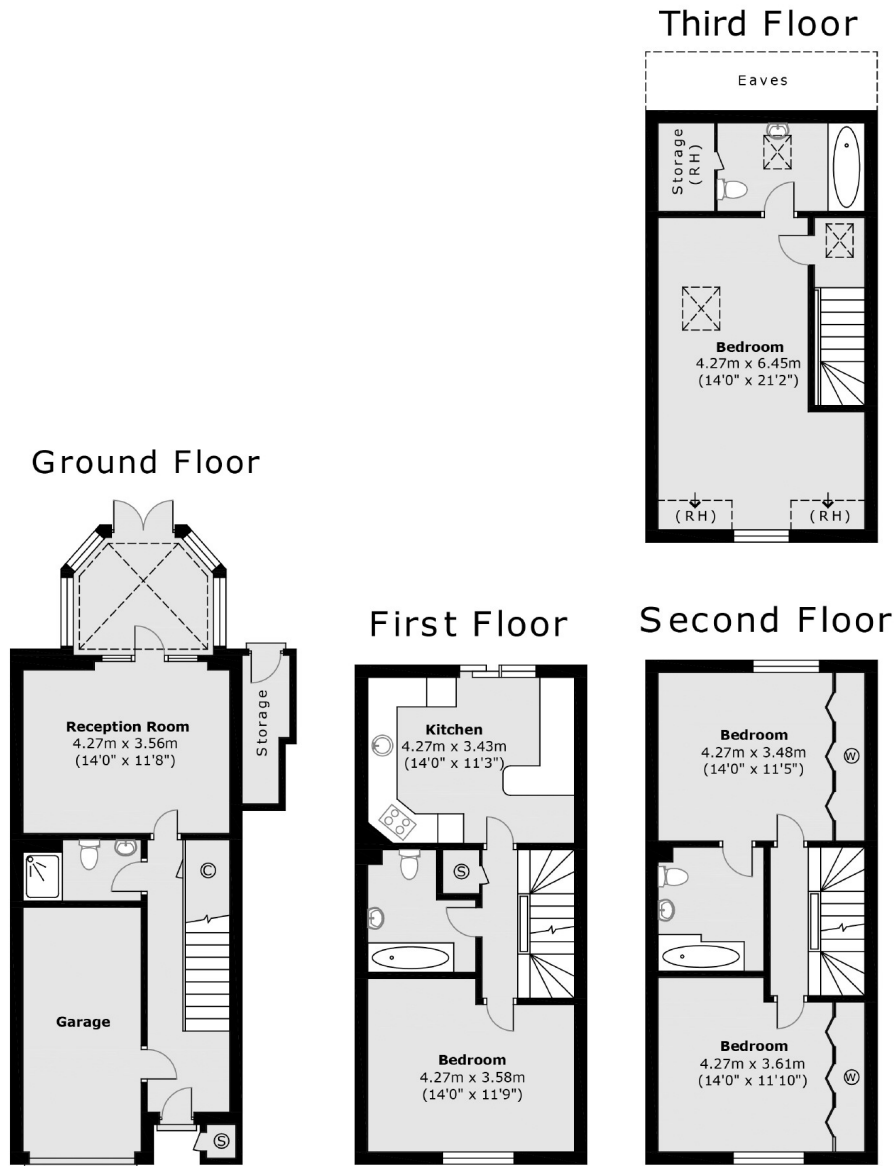
Hills Mews, W5

£1,200,000

This four bedroom, four bathroom townhouse is located on one of Ealing's premier roads, a short walk from The Broadway. The house has off-street parking, integral garage and over 1650 sq ft of internal living space.

Just over a quarter of a mile to Ealing Broadway station (Crossrail, Central and District lines and local restaurants, shops and cafés. The wide-open spaces of Ealing Common are 100 yards away.

- No Onward Chain • Off-Street Parking • Four Double Bedrooms •
- Integral Garage • Townhouse • Conservatory •



Main area: Approx. 155.3 sq. meters (1,671.4 sq. feet)
 Plus garage/storage: approx. 15.1 sq meters (162.1 sq feet)

Robertson Smith & Kempson Ealing Sales
 1 The Broadway, London,
 W5 2NT
 020 8840 7677
ealingsales@robertsonsmithandkempson.co.uk

Energy Rating: C. We aim to make our particulars both accurate and reliable. However they are not guaranteed; nor do they form part of an offer or contract. If you require clarification on any points then please contact us, especially if you're traveling some distance to view. Please note that appliances and heating systems have not been tested and therefore no warranties can be given as to their good working order.