



Webber Street, SE1

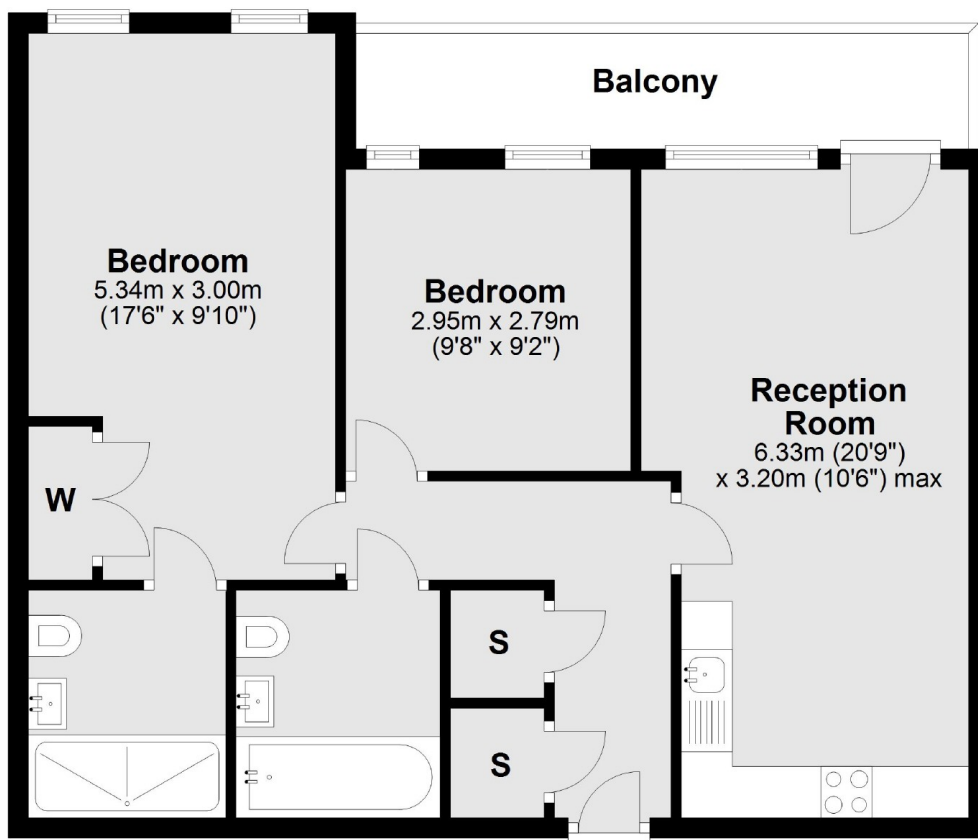
£649,950

An attractive modern apartment with two generous double bedrooms, two bathrooms, a spacious open plan kitchen and living room and a

Webber Street is found in the heart of SE1, between Borough, Southwark and London Bridge stations, with easy access to the

- Two Double Bedrooms • Two Bathrooms • Private Balcony • Communal Courtyard • 24 Hour Concierge • Secure

Fifth Floor



Main area: Approx. 62.2 sq. metres (669.2 sq. feet)

Plus balconies, approx. 7.5 sq. metres (80.5 sq. feet)

City Docklands
205 Tooley Street
London, SE1 2JX
020 7234 0880
welcome@citydocklands.com

Energy Rating: C. We aim to make our particulars both accurate and reliable. However they are not guaranteed; nor do they form part of an offer or contract. If you require clarification on any points then please contact us, especially if you're traveling some distance to view. Please note that appliances and heating systems have not been tested and therefore no warranties can be given as to their good working order.