



Shad Thames, SE1

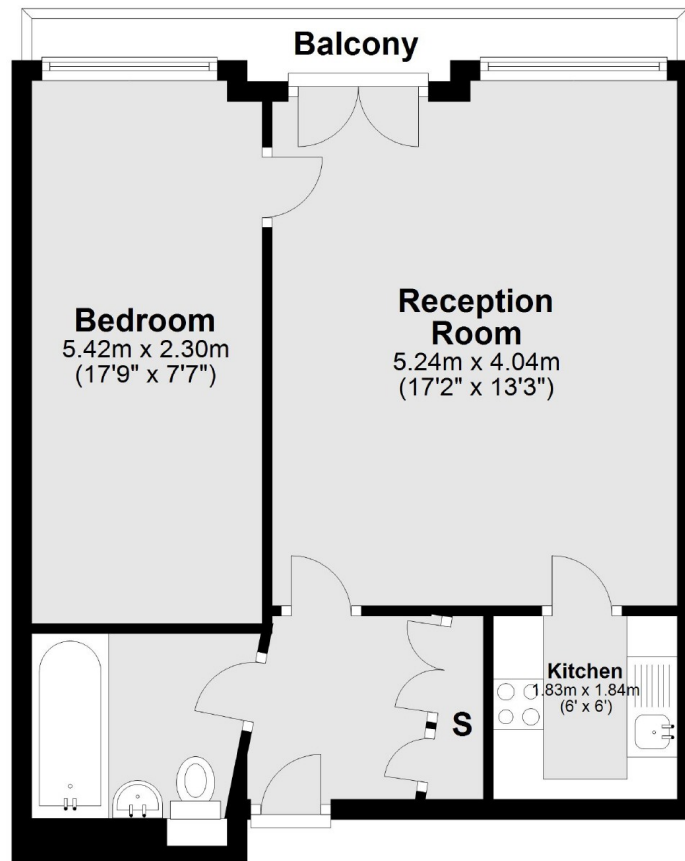
£599,999

Located in the heart of Shad Thames, this one double bedroom flat is in fantastic condition and boasts a spacious open plan kitchen living

Anchor Brewhouse is situated directly on the river Thames with great views of Tower Bridge and the City. The cobbled streets and

• One Double Bedroom • Private Balcony • Period Features • Concierge • Fantastic Condition • Secure Allocated

First Floor



Total area: approx. 46.6 sq. metres (501.7 sq. feet)

City Docklands
205 Tooley Street
London, SE1 2JX
020 7234 0880
welcome@citydocklands.com

Energy Rating: . We aim to make our particulars both accurate and reliable. However they are not guaranteed; nor do they form part of an offer or contract. If you require clarification on any points then please contact us, especially if you're traveling some distance to view. Please note that appliances and heating systems have not been tested and therefore no warranties can be given as to their good working order.