

Abbeville Road, SW4

£1,395,000

A late Victorian terrace family house which retains many Victorian features, including the loft space it already offers over 2,000 Sq Ft, yet this can be further increased subject to planning permission.

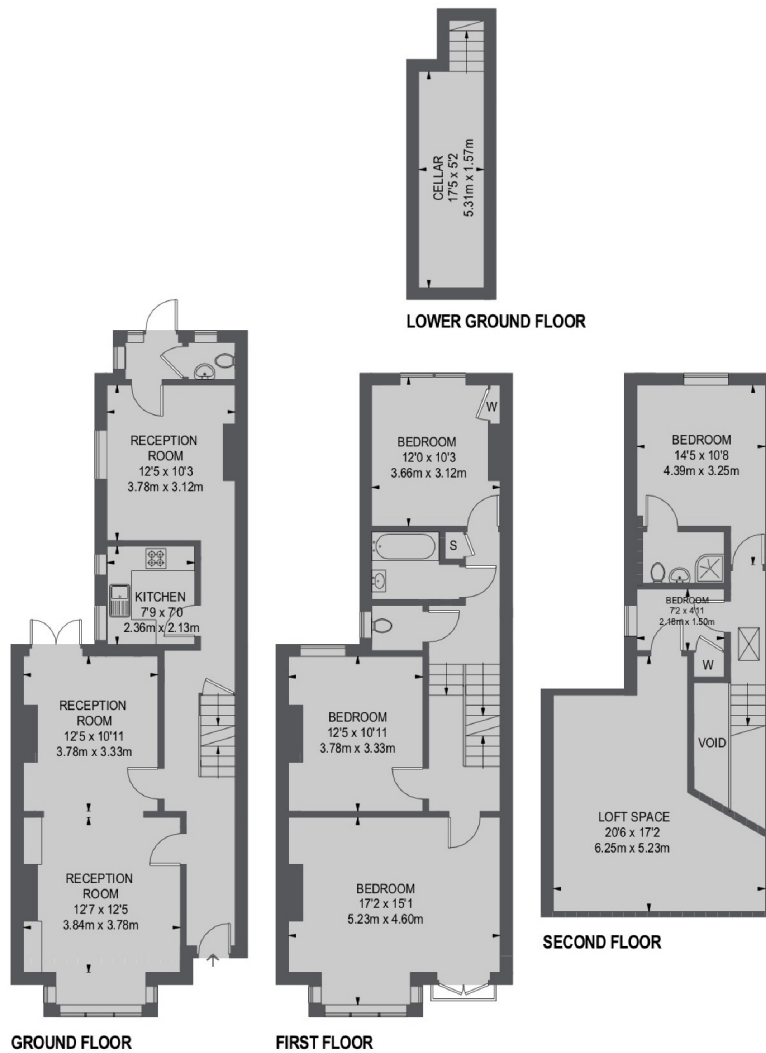
- Victorian Terrace
- 2,000 Sq Ft
- Abbeville Village
- Well Maintained
- Four Bedrooms
- Two Bathrooms



Set well back from the road behind a neat front garden, the original front door with stained glass opens into the tessellated tiled hallway which has ornate plaster ceiling corbels and the original newel post and balustrade. The hallway leads down to the cellar and leads also to all rooms on the ground floor. The wide double reception room again has a pair of feature fireplaces and ornate plaster work to the ceiling. The rear on the ground floor comprises; small kitchen adjacent to a dining room which leads to a small porch which has plumbing for a washing machine and leads in turn to a W/C and also into the south facing garden which, has far reaching views to the rear, given it has no other homes directly behind it. Over the first and second floors are four double bedrooms, two bathrooms and a small box room which has access to a super large loft. Offered with a new roof, some double glazed sash windows and a virtually brand new central heating boiler there is scope to further update the house and substantially extend into the loft and to the side return.







TOTAL APPROX. FLOOR AREA
(EXCLUDING VOID)
2021 SQ. FT. (187.77 SQ. M.)

Jacksons Clapham
73 Abbeville Road
London
SW4 9JN
020 8875 7995
clapham.sales@jacksonsestateagents.com

Energy Rating: D We aim to make our particulars both accurate and reliable. However they are not guaranteed; nor do they form part of an offer or contract. If you require clarification on any points then please contact us, especially if you're traveling some distance to view. Please note that appliances and heating systems have not been tested and therefore no warranties can be given as to their good working order.