



Elms Crescent, SW4

£1,950,000

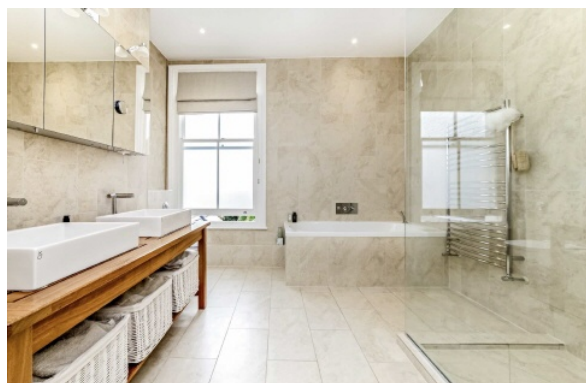
An exquisitely presented, late Victorian terraced family house, measuring 2,251 Sq Ft, which has been fully extended into the loft as well as the 'side return' on the ground floor.

- Victorian Terraced Home
- Fully Extended
- Five Bedrooms
- Three bathrooms
- Front and Rear Gardens
- Close To Clapham South Tube



Set back from the road behind a large front garden which offers; potential off street parking this fully modernised home has accommodation arranged over four levels and briefly comprises; entrance hall, basement utility room, double reception room, full width kitchen/dining room, cloakroom/W.C. Over the first and second floors are five bedrooms served by three bathrooms, two of which are en-suite. Finally, the large southerly aspect rear garden is secluded and well stocked and has a large tiled terrace.

Elms Crescent, considered to be one of the premier roads in the heart of Abbeville Village, and therefore close to excellent local shops, bars and restaurants, convenient for Clapham Common and the tube at Clapham South and well placed for a number of pre-school clubs and primary schools in the private and state sectors.







TOTAL APPROX. FLOOR AREA (EXCLUDING EAVES)
2251 SQ. FT. (209.1 SQ. M.)

Jacksons Clapham
73 Abbeville Road
London
SW4 9JN
020 8875 7995
clapham.sales@jacksonsestateagents.com

Energy Rating: D We aim to make our particulars both accurate and reliable. However they are not guaranteed; nor do they form part of an offer or contract. If you require clarification on any points then please contact us, especially if you're traveling some distance to view. Please note that appliances and heating systems have not been tested and therefore no warranties can be given as to their good working order.