



Elms Crescent, SW4

£1,399,950

A large family house already measuring circa 1,900 Square Feet, yet is unextended to the 'side return' and into the loft, therefore offering potential to create an exceedingly substantial family house.

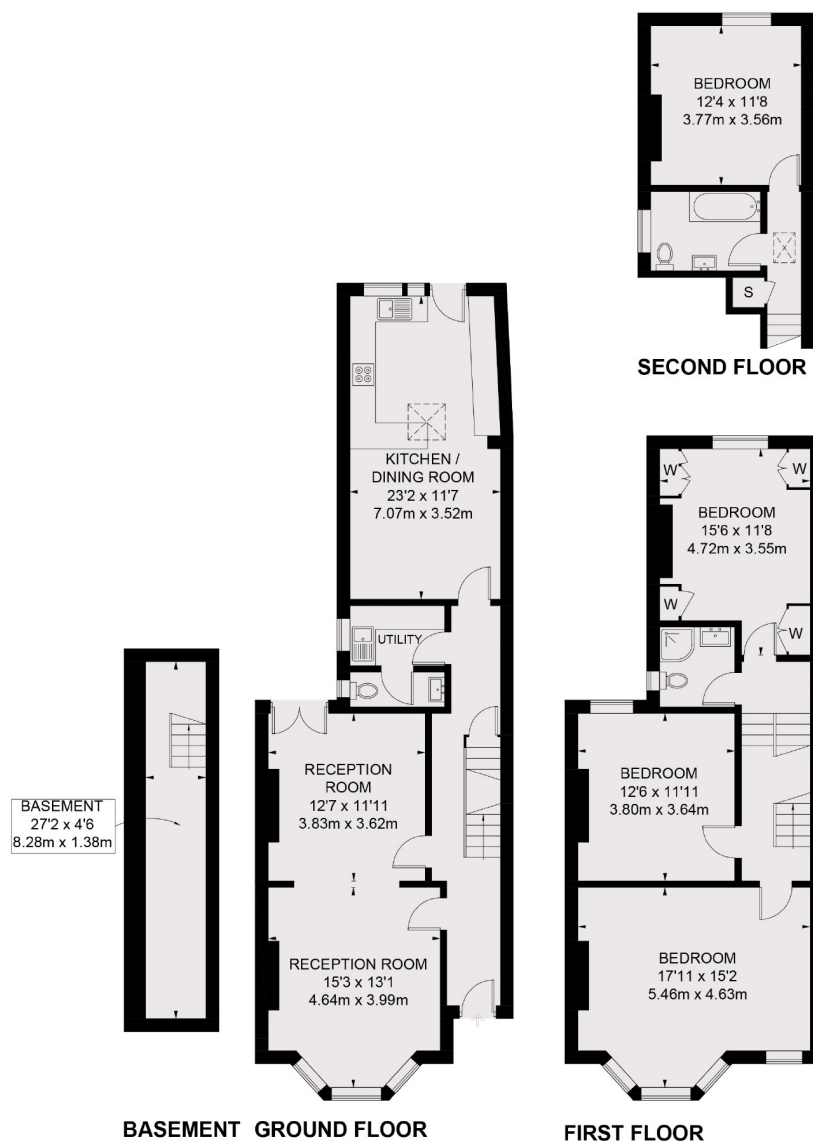
- Development Potential
- Circa 1,900 Sq. Ft.
- Scovel to Extend
- Period Features
- Good Size Garden
- Freehold



Arranged over three floors and retaining many fine period features the property which has a renewed roof and gas central heating is nonetheless in need of further refurbishment and would make an incredible project, yet can be occupied as is, and worked on gradually over time. Currently configured as four double bedrooms and two bathrooms there is a huge loft which will convert to two large bedroom or one very large bedroom and a bathroom. The ground floor has a wide double reception room with fine period features and a very large kitchen dining room which measures 23' in length plus there's a utility room and very useful ground floor W.C. To the rear is a slightly larger than average rear garden which has been well maintained.

Elms Crescent is a lovely residential road within easy reach of the Abbeville Village and a little further to Clapham Common and the Northern Line stations either end of the common.





FLOOR AREA 1770 SQ. FT. (164.4 SQ. M.)
BASEMENT AREA 125 SQ. FT. (11.6 SQ. M.)
TOTAL APPROX. FLOOR AREA 1895 SQ. FT. (176.0 SQ. M.)

Jacksons Clapham
73 Abbeville Road
London
SW4 9JN
020 8875 7995
clapham.sales@jacksonsestateagents.com

Energy Rating: D We aim to make our particulars both accurate and reliable. However they are not guaranteed; nor do they form part of an offer or contract. If you require clarification on any points then please contact us, especially if you're traveling some distance to view. Please note that appliances and heating systems have not been tested and therefore no warranties can be given as to their good working order.