



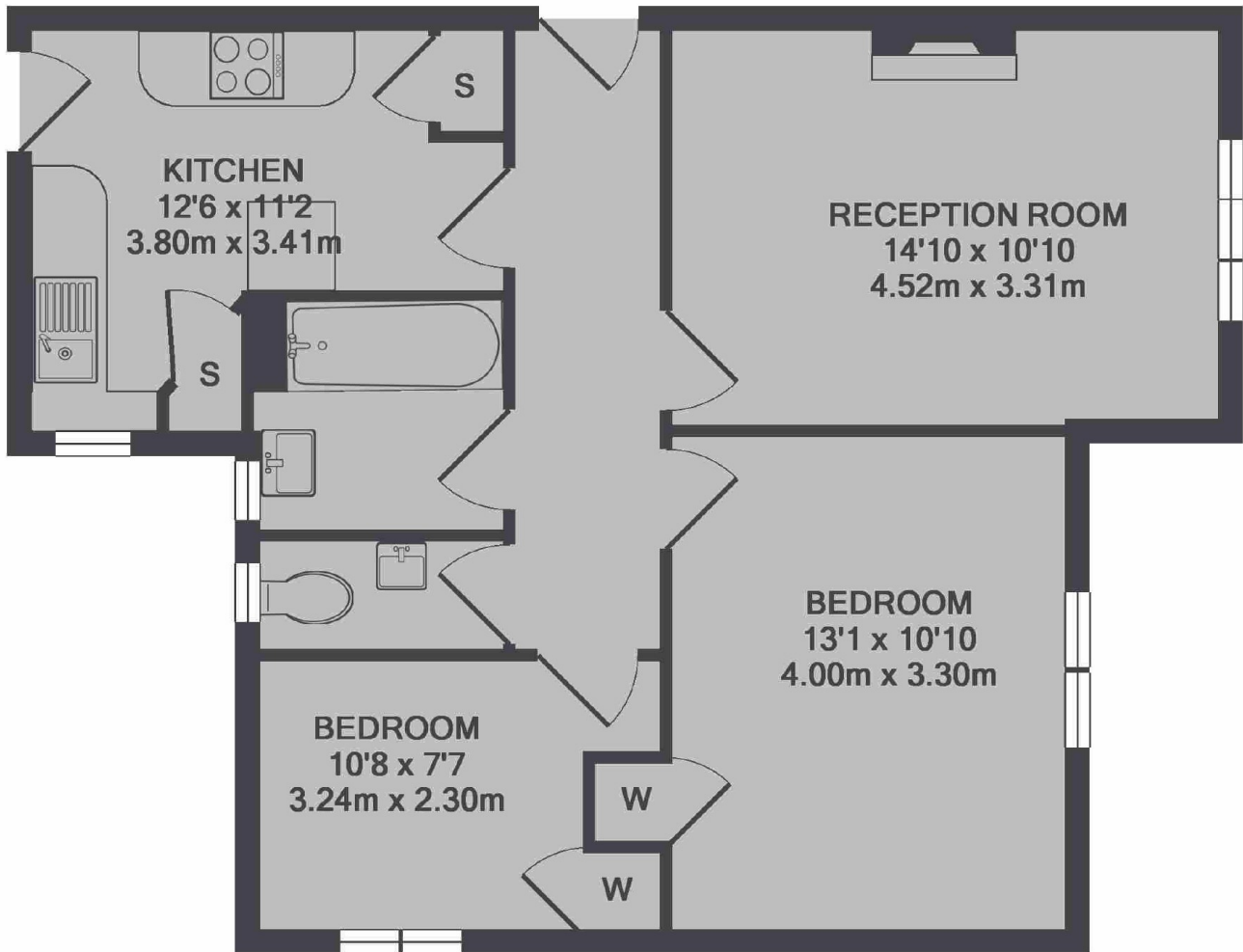
Montpelier Road, W5

£549,950

This ground floor apartment has a reception room, kitchen with breakfast bar, two double bedrooms and a bathroom with separate WC. The property also has a residents parking area and the flat has direct access to the communal gardens.

The flat is walking distance to Ealing Broadway station (Central and District lines and future Crossrail) and vast choice of shops and restaurants.

- Ground Floor Apartment • No Onward Chain • Purpose Built •
- Communal Gardens • Residents Parking • Excellent Schools Near •



TOTAL APPROX. FLOOR AREA 642 SQ.FT. (59.7 SQ.M.)

Robertson Smith & Kempson Ealing Sales
1 The Broadway, London,
W5 2NT
020 8840 7677
ealingsales@robertsonsmithandkempson.co.uk

Energy Rating: E. We aim to make our particulars both accurate and reliable. However they are not guaranteed; nor do they form part of an offer or contract. If you require clarification on any points then please contact us, especially if you're traveling some distance to view. Please note that appliances and heating systems have not been tested and therefore no warranties can be given as to their good working order.