



## Hassocks Road, SW16

£600,000

An immaculately presented and extended large family home with off street parking and a well maintained, established private rear garden.

- Excellent Condition
- Four Bedrooms
- Two Reception Rooms
- Freehold
- Off Street Parking
- Desirable Location



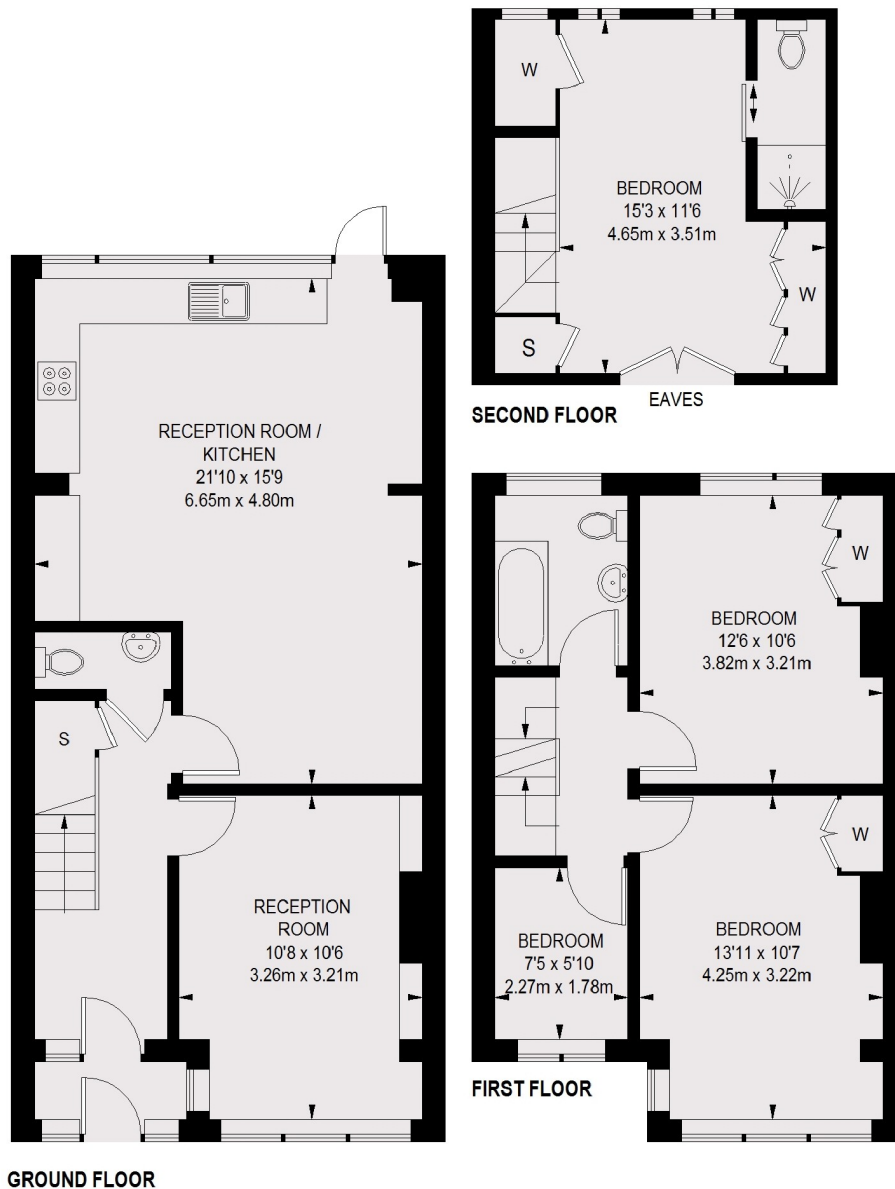
Hassocks Road is located in the heart of Streatham Vale (SW16, zone 3) within an easy walk to Streatham Common Station.

Streatham Common Station has direct trains to Victoria Station (within 15 minutes), Clapham Junction (within 10 minutes) and London Bridge (within 25 minutes). There is also a bus stop at the end of the road offering services to Brixton, which has both mainline and underground stations. Both Stanford and Woodmansterne Primary Schools are close by. There are also many pubs, cafes and supermarkets within walking distance.









TOTAL APPROX. FLOOR AREA (EXCLUDING EAVES) 1252 SQ. FT. (116.3 SQ. M.)

Jacksons Streatham  
1-3 De Montfort Parade  
Streatham High Road  
Streatham  
London  
SW16 1BU

Energy Rating: C We aim to make our particulars both accurate and reliable. However they are not guaranteed; nor do they form part of an offer or contract. If you require clarification on any points then please contact us, especially if you're traveling some distance to view. Please note that appliances and heating systems have not been tested and therefore no warranties can be given as to their good working order.