

FLETCHERS

ESTATE AGENTS



Emlyn Road, W12

£392 Per week (£1,700 pcm)

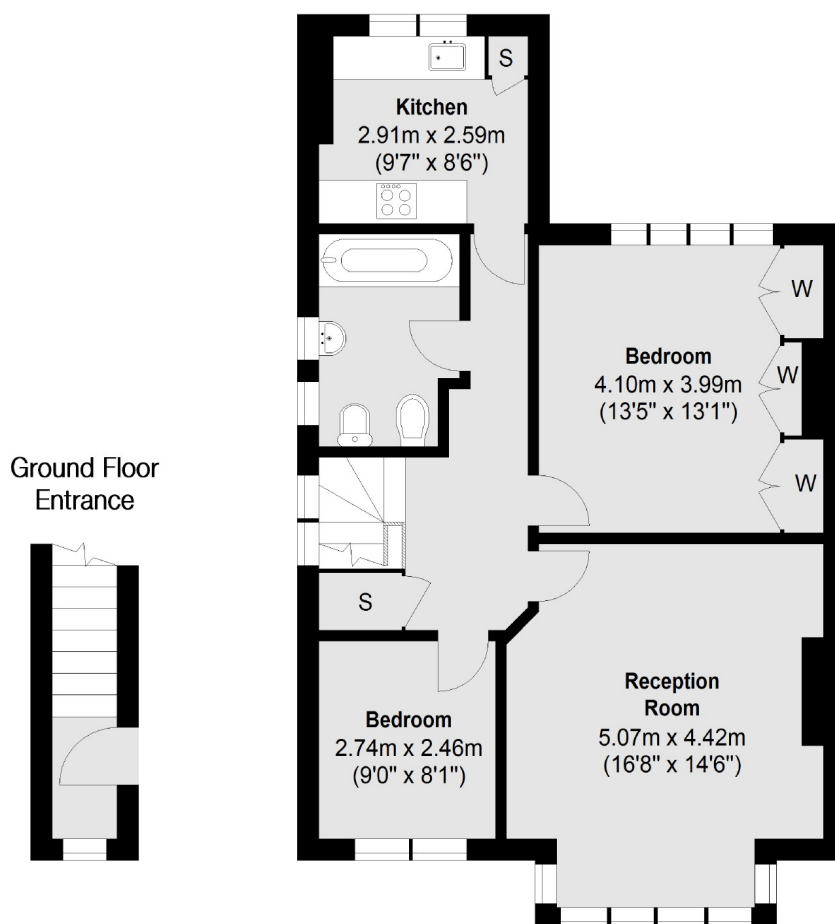
Emlyn Road is a popular residential address and conveniently located for the shops and amenities of both Shepherd's Bush and Chiswick High Road.

- Two Bedrooms • Fitted Kitchen • Ample Storage • Residential Street • Modern Bathroom • Central Location •

FLETCHERS

ESTATE AGENTS

First Floor



Internal Area (approx.): 72.3 sq. m (778.3 sq. ft)

Fletchers Chiswick High Road Lettings
86 Chiswick High Road, Chiswick, London, W4 1SY
020 8742 4100
chiswicklettings@fletcherestates.com

Energy Rating: . We aim to make our particulars both accurate and reliable. However they are not guaranteed; nor do they form part of an offer or contract. If you require clarification on any points then please contact us, especially if you're traveling some distance to view. Please note that appliances and heating systems have not been tested and therefore no warranties can be given as to their good working order.