



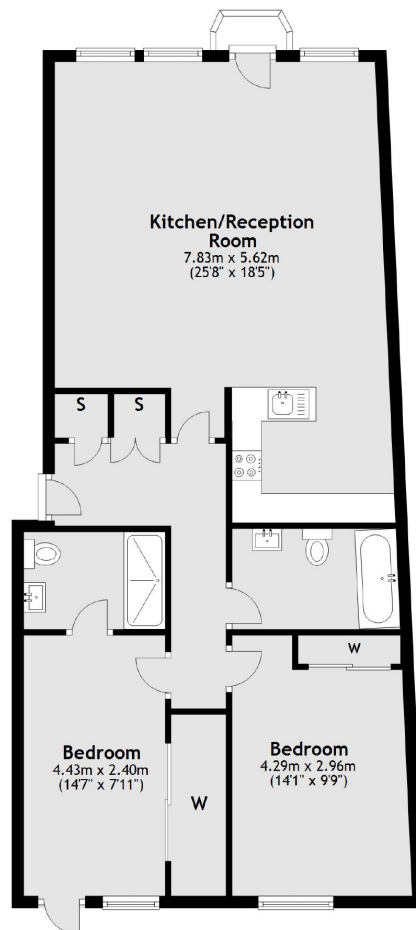
Jacob Street, SE1

£850,000

Located in the heart of Shad Thames, this two double bedroom flat is in immaculate condition and boasts a large open plan kitchen living

Hobbs Court is located only 0.3 miles to Bermondsey station and 0.5 miles from London Bridge station. Shad Thames, The Riverside and

- Two Double Bedrooms • Two Bathrooms • Concierge
- Facilities • Private Balcony • Communal Roof Terrace • Secure



Top Floor

Main area: Approx. 84.9 sq. metres (913.4 sq. feet)
Plus balconies, approx. 0.7 sq. metres (7.1 sq. feet)

City Docklands
205 Tooley Street
London, SE1 2JX
020 7234 0880
welcome@citydocklands.com

Energy Rating: C. We aim to make our particulars both accurate and reliable. However they are not guaranteed; nor do they form part of an offer or contract. If you require clarification on any points then please contact us, especially if you're traveling some distance to view. Please note that appliances and heating systems have not been tested and therefore no warranties can be given as to their good working order.