

Chard

Lettings



Rostrevor Road, SW6

£615 pw (£2,665 pcm)

This split level three bedroom, two bathroom ground and lower ground floor flat is located in the heart of Parsons Green. The property has a spacious open-plan living area with a modern fitted kitchen and doors leading to a private garden.

Rostrevor Road is off Fulham Road in Parsons Green. Parsons Green station is moments away and offers excellent bus routes. There is a selection of local amenities, bars, restaurants and boutique coffee shops all on your doorstep.

- Three Bedrooms • Two Bathrooms • Open-plan •

Chard

Lettings

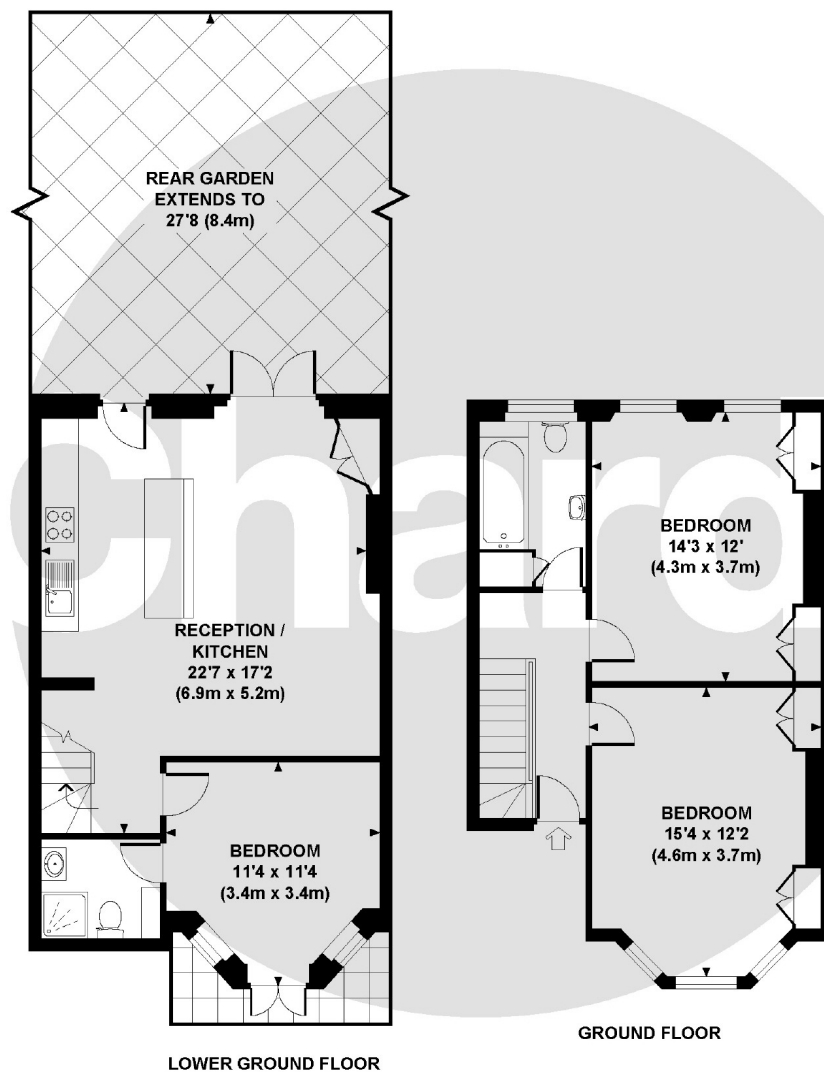
ROSTREVOR ROAD, SW3

Approx. gross internal area

960 Sq Ft / 89.3 Sq M.

Representation of current layout.

Not to scale.



Chard Fulham
5 Harwood Road,
London, SW6 4QP
020 7384 1400
fulhamlettings@chard.co.uk

Energy Rating: D. We aim to make our particulars both accurate and reliable. However they are not guaranteed; nor do they form part of an offer or contract. If you require clarification on any points then please contact us, especially if you're traveling some distance to view. Please note that appliances and heating systems have not been tested and therefore no warranties can be given as to their good working order.