

Chard

— Lettings —



The Boulevard, SW6

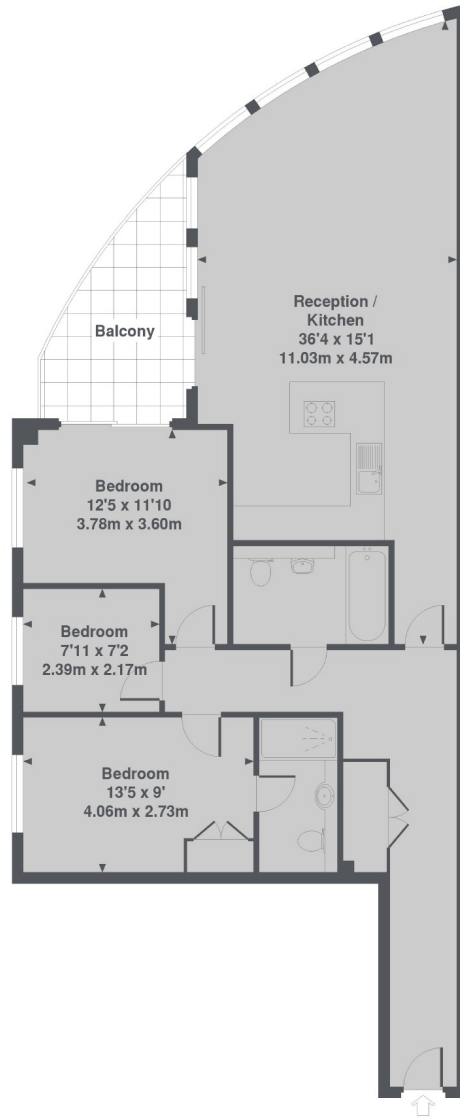
£600 pw (£2,600 pcm)

This two double bedroom, sixth floor apartment in Imperial Wharf riverside development has a spacious open-plan living room with a modern integrated kitchen, two bathrooms, a further bedroom/study, a private balcony and underground parking available on separate negotiation.

Imperial Wharf Overground station is moments away along with many bus routes. For a scenic mode of transport, the river taxi is on your doorstep with routes into the city and Wandsworth. Fulham Broadway and Battersea are all close by providing excellent amenities.

Chard

Lettings



Chelsea Vista, Imperial Wharf, SW6
Total Approx. Floor area 997 Sq. Ft. (92.6 Sq. M.)

Chard Fulham
5 Harwood Road,
London, SW6 4QP
020 7384 1400
fulhamlettings@chard.co.uk

Energy Rating: B. We aim to make our particulars both accurate and reliable. However they are not guaranteed; nor do they form part of an offer or contract. If you require clarification on any points then please contact us, especially if you're traveling some distance to view. Please note that appliances and heating systems have not been tested and therefore no warranties can be given as to their good working order.