

DOMUS NOVA

nottinghill@domusnova.com | 020 7727 1717

[Property](#) / [Map](#) / [Floor plan](#) / [Contact](#)



TREADGOLD STREET, W11

£2,100,000

DOMUS NOVA

[Property](#) / [Map](#) / [Floor plan](#) / [Contact](#)

Treadgold Street, W11

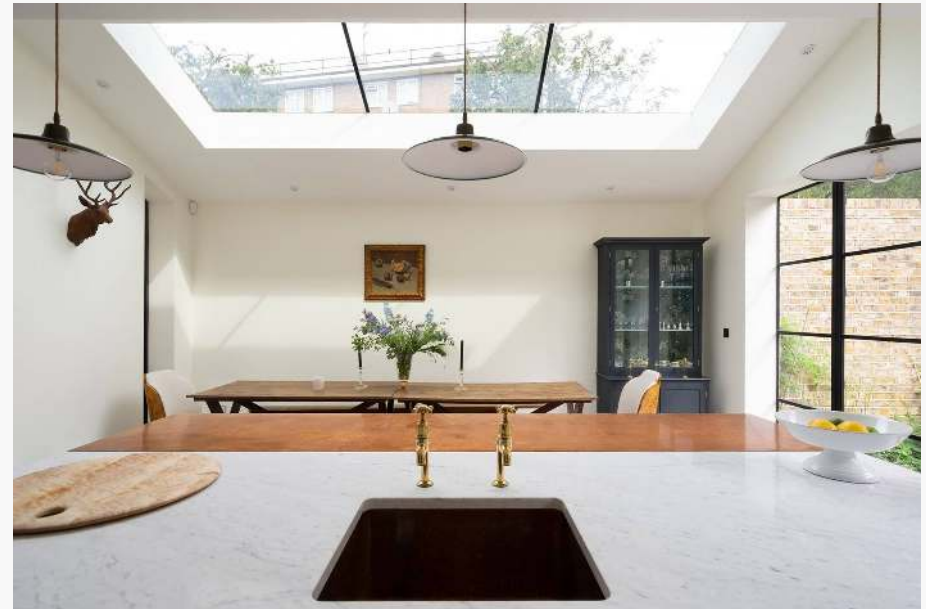
£2,100,000

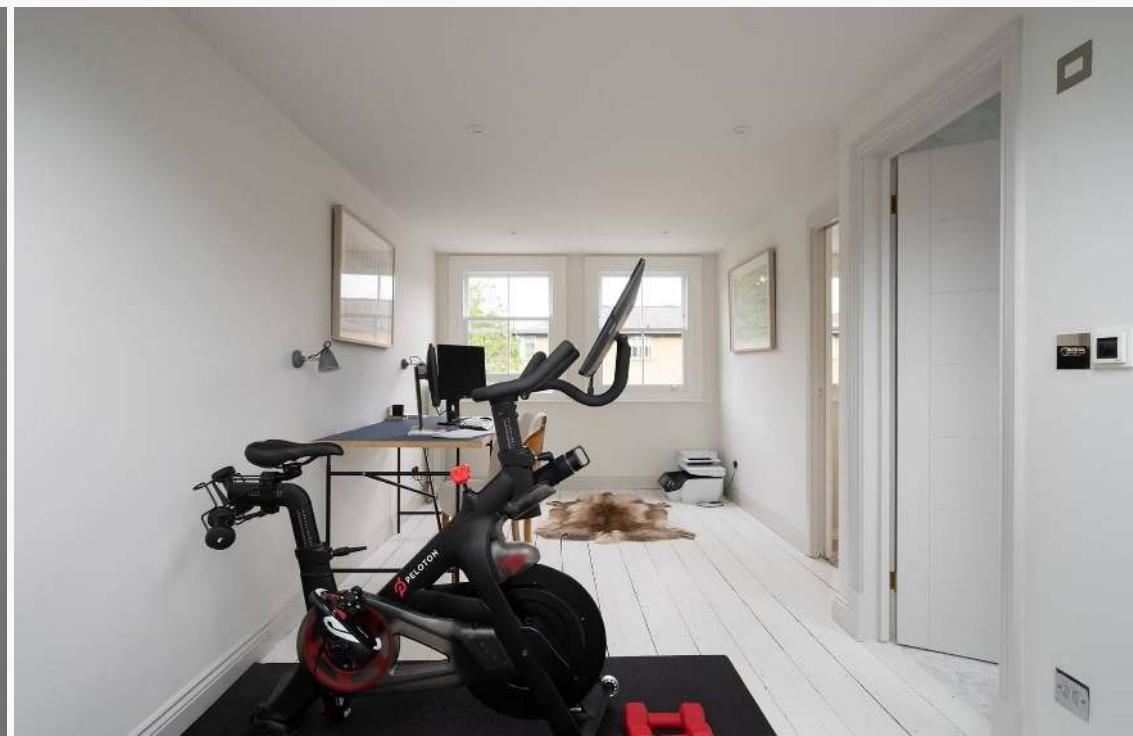
A sensational, cool, eccentric and stylish home. Arranged over three inviting floors, this expertly designed and reimagined three-bedroom house marries traditional proportions with fresh, modern interiors and finishes. A refined double reception room, with reclaimed Victorian Hackney oak parquet flooring and marble fire surround, sets the scene for the rest of the home. The wonderful reception space gives way to an incredibly cool open-plan kitchen / dining room. This dynamic space is immaculately finished and incorporates a DeVol kitchen with cobalt blue cabinetry, marble surfaces, brass fittings and a warm brass countertop. A pair of 'Crittall' style Fabco doors open onto the beautifully planted, paved and wonderfully inviting walled garden. The master bedroom, on the first floor, offers large sash windows, stripped wood floors, period proportions and a dreamy en suite bathroom with roll top bath and marble shower. There are two additional double bedrooms, both with en suites, one of which is built within the loft space and bathed in natural light from the various skylights. This is one seriously fresh, cool and grown up home.

- Double reception room
- DeVol kitchen / dining room with brass breakfast bar
- Master bedroom with en-suite
- Two guest bedrooms both with en-suite
- Guest cloakroom
- Walled garden
- Royal Borough of Kensington & Chelsea
- Approx. 1,592 sq ft / 147.9 sq m. EPC=D



[VIEW PROPERTY ON DOMUSNOVA.COM](#)








DOMUS NOVA

Map

 Treadgold Street, W11

Local Information

Architecture

- 1 Nash Baker Architects
- 2 Camu & Morrison
- 3 Kohn Pedersen Fox Associates

Art & Culture

- 1 Electric Cinema
- 2 Siegfried Contemporary

Design

- 1 Minotti London
- 2 Uncommon Projects
- 3 Violet & George
- 4 Graham & Green

Fashion

- 1 REFORMATION
- 2 Paul Smith

Food & Drink

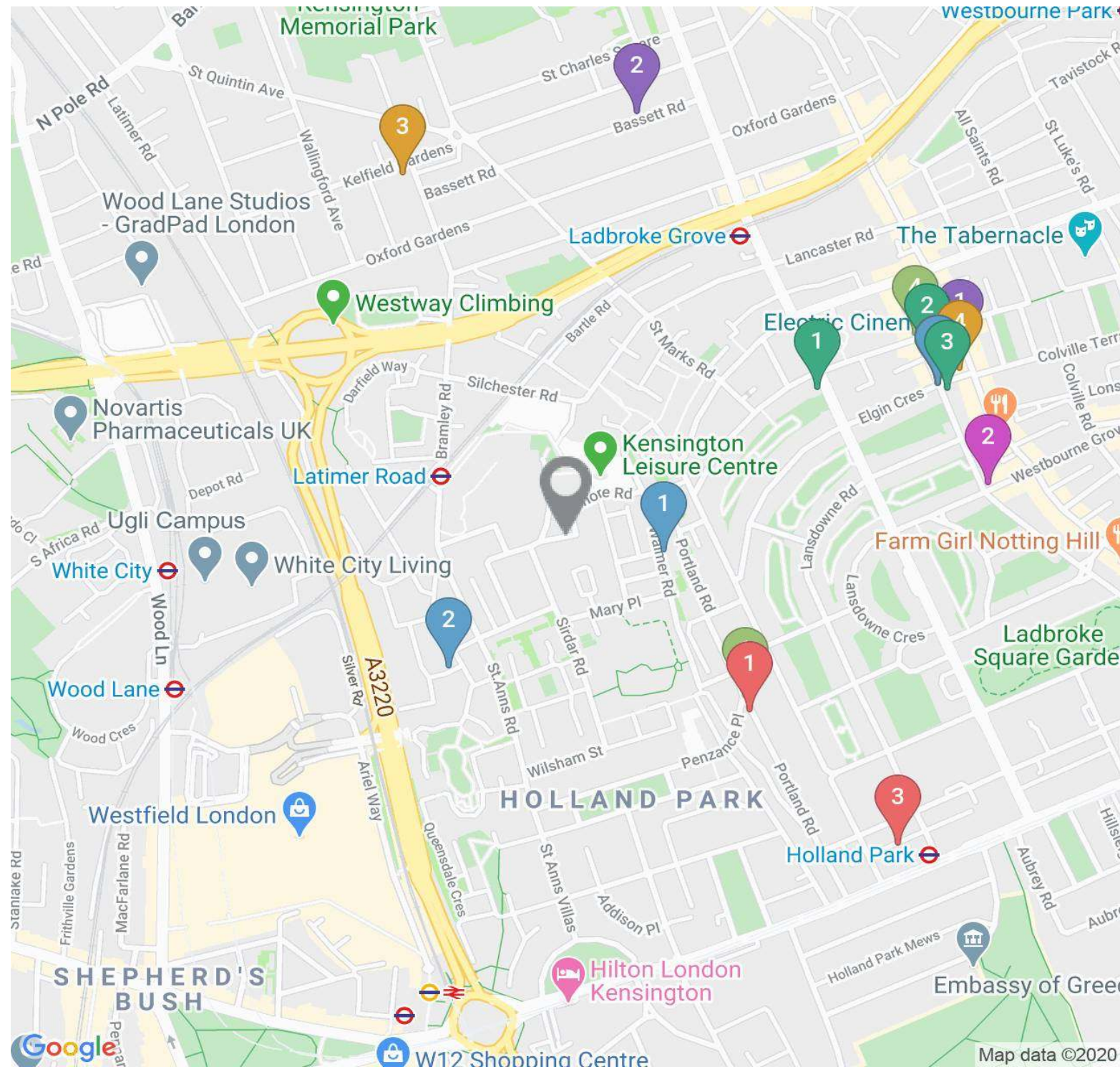
- 1 Julie's Wine Bar
- 2 Aubaine
- 3 HAYA
- 4 E & O

Indulge

- 1 Cowshed Spa
- 2 Boutique Spa
- 3 Josh Wood Colour

Shopping

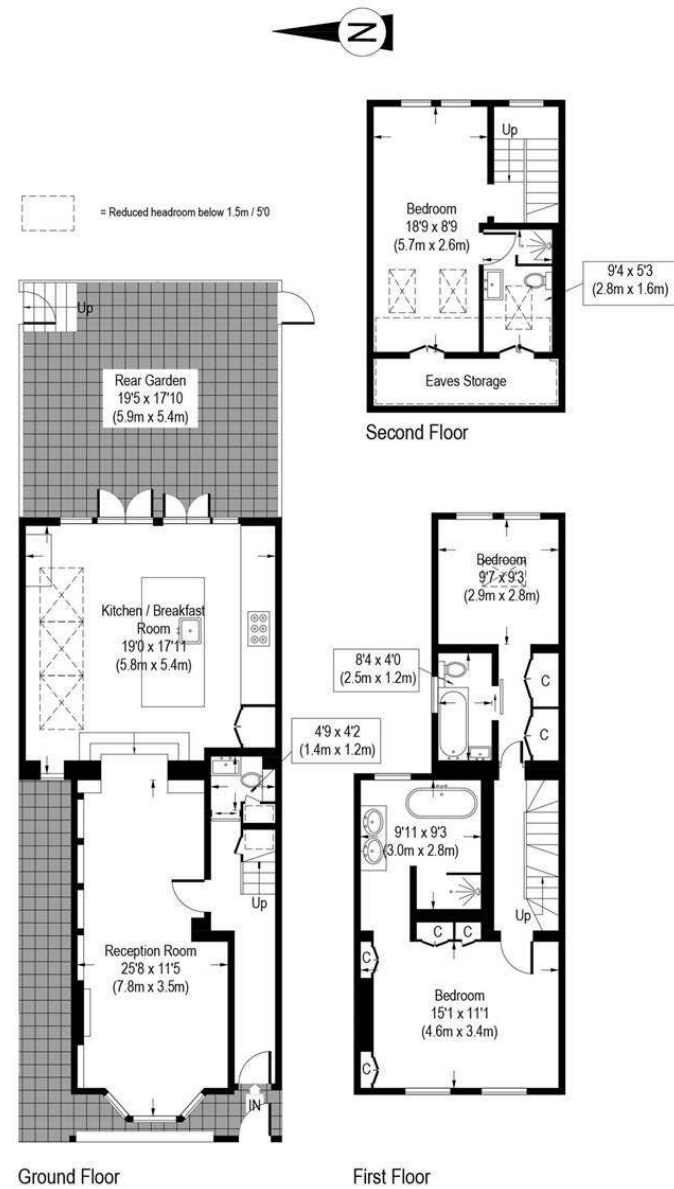
- 1 Provenance
- 2 Biscuiteers
- 3 Harper and Tom's



Floor plan

This image is illustrative only

(Not to scale)



Approximate Gross Internal Area (Excluding Eaves Storage / Reduced Headroom)
1491 Sq.Ft. / 138.5 Sq.M.

Approximate Gross Internal Area (Including Eaves Storage / Reduced Headroom)
1592 Sq.Ft. / 147.9 Sq.M.

Floor Plans are for illustrative purposes only and not to scale.
Compliant with RICS code of measuring practice.

DOMUS NOVA

[Property](#) / [Map](#) / [Floor plan](#) / [Contact](#)

Contact

1 Domus Nova Notting Hill

17 Kensington Park Road, London W11 2EU

020 7727 1717

nottinghill@domusnova.com

2 Domus Nova Bayswater

78 Westbourne Grove, London W2 5RT

020 7221 7817

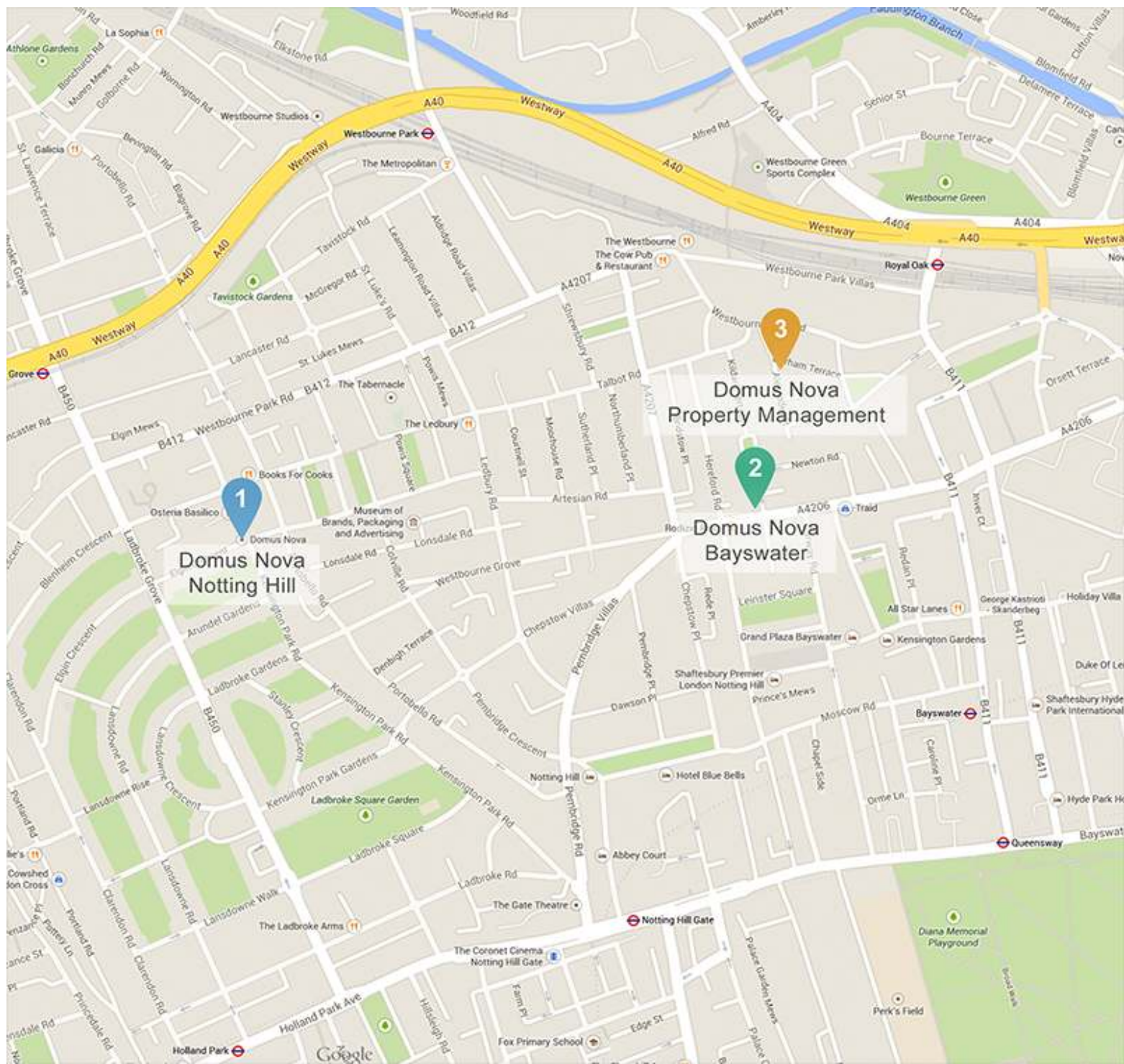
bayswater@domusnova.com

3 Domus Nova Property Management

37 Alexander Street, London W2 5NU

020 7908 9338

management@domusnova.com



A photograph of a brick building with large glass doors and windows, a patio with a table and chairs, and a garden with purple flowers. The text "DOMUSNOVA.COM" is overlaid in the center.

DOMUSNOVA.COM