

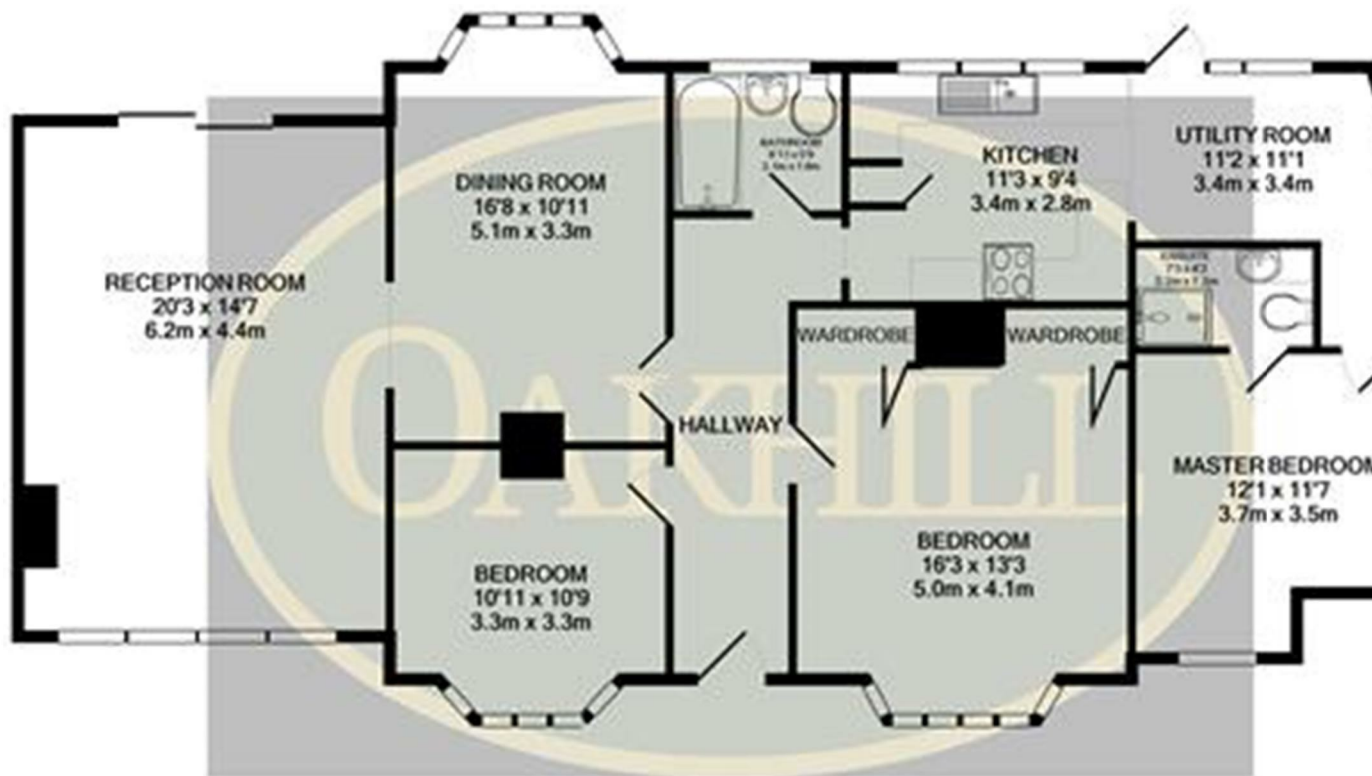


## Woodland Gardens, Isleworth, Middlesex TW7 6LS

VIDEO AND APPOINTMENT VIEWINGS AVAILABLE BY REQUEST. Situated on a desirable road close to local amenities, this three bedroom detached bungalow is offered chain free. Featuring three double bedrooms, a large reception room, dining room and a separate kitchen. The property also offers a large rear garden, off street parking, double glazing, gas central heating and loft space with potential to convert, subject to the relevant planning permission.


**£759,950**





Whilst every attempt has been made to ensure the accuracy of the floor plan contained here, measurements of doors, windows, rooms and any other items are approximate and no responsibility is taken for any error, omission, or mis-statement. This plan is for illustrative purposes only and should be used as such by any prospective purchaser. The services, systems and appliances shown have not been tested and no guarantee as to their operability or efficiency can be given.  
Made with Metropix Q2020

Energy Efficiency Rating		
	Current	Potential
Very energy efficient - lower running costs		
(92 plus) A		83
(81-91) B		
(69-80) C		
(55-68) D	68	
(39-54) E		
(21-38) F		
(1-20) G		
Not energy efficient - higher running costs		
England & Wales		EU Directive 2002/91/EC

Environmental Impact (CO <sub>2</sub> ) Rating		
	Current	Potential
Very environmentally friendly - lower CO <sub>2</sub> emissions		
(92 plus) A		79
(81-91) B		
(69-80) C		
(55-68) D	62	
(39-54) E		
(21-38) F		
(1-20) G		
Not environmentally friendly - higher CO <sub>2</sub> emissions		
England & Wales		EU Directive 2002/91/FC 



6 South Street, Isleworth, TW7 7BG  
Tel: 0208 568 4433  
info@oakhillagents.co.uk  
www.oakhillagents.co.uk

OAKHILL