



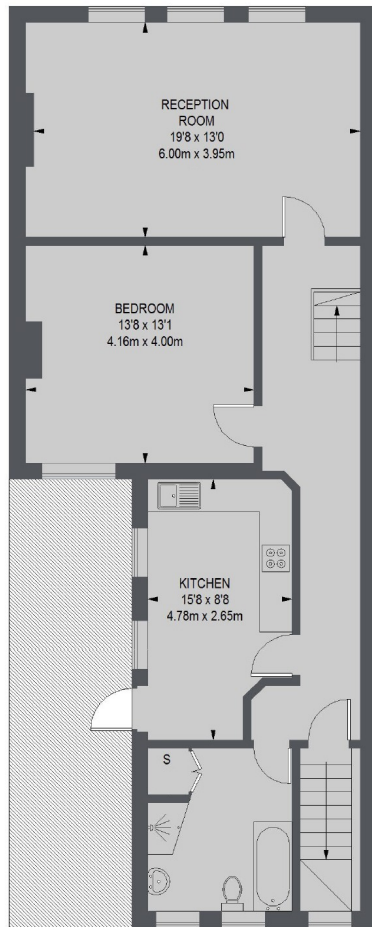
North End Road, SW6

£650 pw (£2,817 pcm)

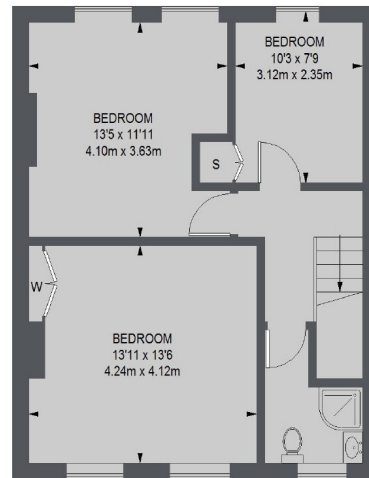
This four double bedroom two bathroom split level flat is located in Fulham with many transport links near-by. The property has a spacious reception room, a eat-in kitchen, good storage space and access to a private roof terrace.

North End Road has a selection of bus routes leading into the city. The closest underground stations are Fulham Broadway and West Brompton and you have many local amenities, restaurants and bars on your doorstep.

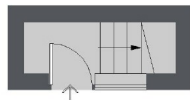
Spacious Living Room Eat-in Kitchen Private Roof Terrace
Split Level Two Bathrooms Ideally Located



FIRST FLOOR



SECOND FLOOR



GROUND FLOOR

TOTAL APPROX. FLOOR AREA 1457 SQ. FT. (135.38 SQ. M.)

Chard Fulham Lettings
5 Harwood Road,
London, SW6 4QP
020 7384 1400
fulhamlettings@chard.co.uk

Energy Rating: C. We aim to make our particulars both accurate and reliable. However they are not guaranteed; nor do they form part of an offer or contract. If you require clarification on any points then please contact us, especially if you're traveling some distance to view. Please note that appliances and heating systems have not been tested and therefore no warranties can be given as to their good working order.