



**Drummau Road,
Skewen SA10 6PA**

- EPC Rating: Awaited
- Detached
- Bungalow
- Three Bedrooms
- Good size Kitchen Diner





About The Property

Three bedroom detached bungalow offered for sale in the popular location of Skewen. Briefly comprising entrance Hall , bathroom with separate wc, three bedrooms, lounge and kitchen diner. Viewing Recommended

Accommodation

Entrance Hall

Via upvc door , doors to :

Cloakroom

W.c, sink,window to side,radiator,tiled floor.

Bathroom

Bath,sink,shower cubicle with electric shower,sink,radiator,vinyl flooring.

Bedroom One

13' 2" into bay x 10' 7" (4.01m into bay x 3.23m)
Bay window to front,radiator,fitted carpet.

Bedroom Two

10' 7" max x 12' 11" into bay (3.23m max x 3.94m into bay)
Bay window to front,radiator,fitted carpet.

Bedroom Three

Peter Alan - Neath

01639 635115
neath@peteralan.co.uk
peteralan.co.uk



10' 11" x 9' 3" (3.33m x 2.82m)
Window to side, radiator, fitted carpet.

Kitchen Diner

25' 7" x 12' 10" max (7.80m x 3.91m max)
Matching wall and base units, sink with mixer tap, tiled splashback, space for dishwasher and washing

machine, space for oven, storage cupboard, combi boiler, window and door to rear, tiled floor.

Lounge

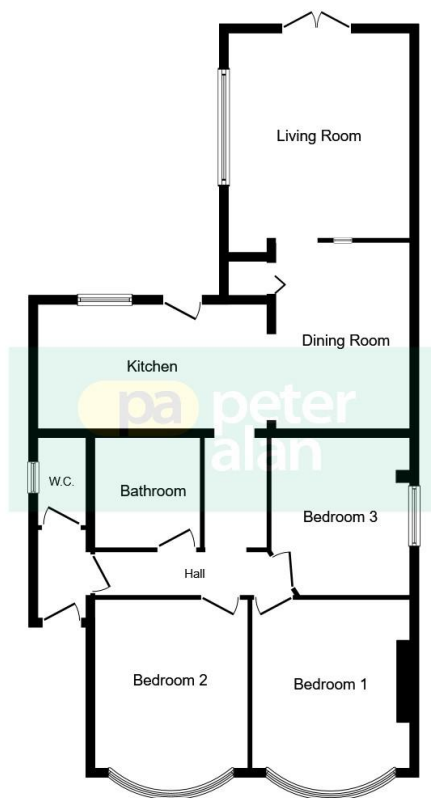
13' 5" x 12' 3" (4.09m x 3.73m)
Patio doors to rear, window to side, radiator, fitted carpet.

Rear Garden

enclosed garden, two storage sheds, patio area, area laid with decorative chipping's.

Front Garden

Good size driveway, area laid with decorative chipping's, side access to rear garden.



Floor Plan

This plan is for illustration purposes only and may not be representative of the property. Plan not to scale.

Powered by audioagent.com

Important Information

Note while we endeavour to make our sales details accurate and reliable, if there is any point which is of particular interest to you, please contact the office and we will be pleased to confirm the position for you. We have not personally tested any apparatus, equipment, fixtures, fittings or services and cannot verify they are in working order or fit for their purposes. Nothing in these particulars is intended to indicate that carpets or curtains, furnishings or fittings, electrical goods (whether wired or not). Gas fires or light fittings or any other fixtures not expressly included form part of the property offered for sale. This computer generated Floorplan, if applicable, is intended as a general guide to the layout and design of the property. It is not to scale and should not be relied upon for dimensions. Tenure: We cannot confirm the tenure of the property as we have not had access to the legal documents. The buyer is advised to obtain verification from their solicitor or surveyor.