



Lifford Street, Putney SW15

Guide Price: £899,950 Freehold

 2  1  1

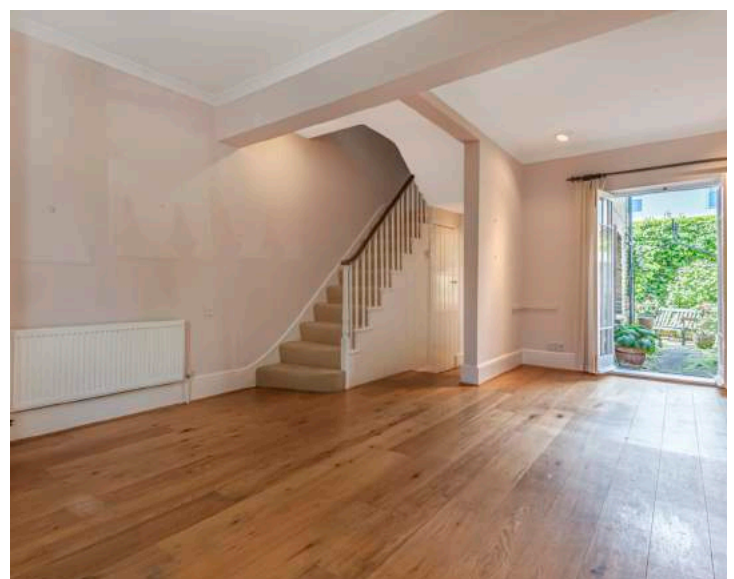
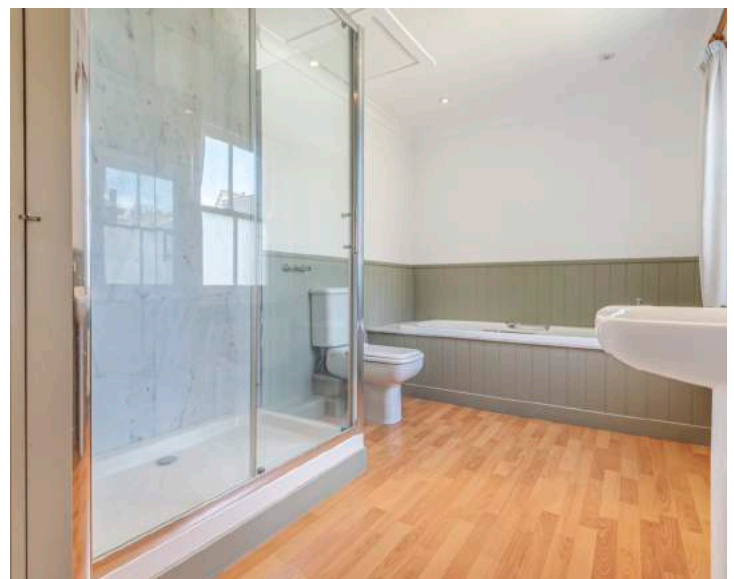
- Charming period home
- Two double bedrooms
- EPC EER D

- Spacious double reception room
- Modern kitchen & bathroom
- Private Garden

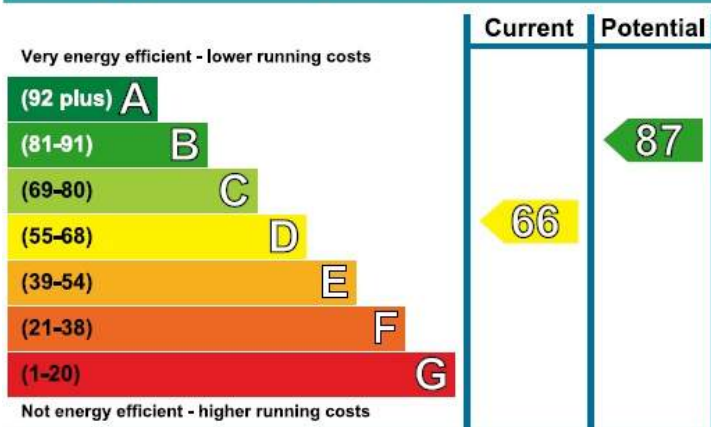


Property Details

A charming mid terrace period home situated in this enviable West Putney cul-de-sac. In excellent condition throughout the accommodation comprises a large double reception room with engineered wood flooring, fireplace, and french doors which open out to a private rear garden. There is a lovely modern kitchen also with access to the garden. On the first floor, there are two good size double bedrooms and a stylish bathroom with separate shower. Lifford Street is located close to Putney High Street with its first class shopping and transport facilities. The Thames Embankment and the Lower Richmond Road with its numerous bars and restaurants are within a short walk. Putney Station is within 0.4m and Putney Bridge station (District Line) is within 0.6m. Please contact Lauristons Estate Agents in Putney for more information.



Energy Efficiency Rating



Lifford Street, Putney, London, SW15

Approximate Area = 886 sq ft / 82.3 sq m

For identification only - Not to scale



Floor plan produced in accordance with RICS Property Measurement Standards incorporating International Property Measurement Standards (IPMS2 Residential). © richcom 2020. Produced for Lauristons. REF: 603460

If you have just started looking or have found your new home, you could benefit from talking to our Financial Services Department. For an informal discussion on anything from costs of moving to the most current mortgage rates please call us on 020 8946 9468. Your home is at risk if you do not keep up with repayments on a mortgage or any other loan secured on it. Written quotations available on request. Viewing is strictly through the owners Lauristons. Putney Office 188 Upper Richmond Road, London SW15 2SH Tel: 020 8780 8780 Fax: 020 8780 8787 Email: enquiries.putney@lauristons.com. For clarification we wish to inform potential purchasers that we prepared these particulars as a general guide. We have not carried out a detailed survey, nor tested the services, appliances and specific fittings. Lease details, where applicable, must be confirmed by your solicitor. Carpets, curtains, gas fires, electrical goods / fittings or other fixtures, unless expressly mentioned, are not included in the sales of this property. If there are any important matters which are unlikely to affect your decision to buy please contact this office and we will be pleased to check the information for you before viewing the property. Before this property can be removed from the market, all offers must be checked by Lauristons Financial Adviser. This is a service we offer on behalf of our clients. Please note that our room sizes are quoted in meters to the nearest tenth of a meter on wall to wall basis. The imperial equivalent is only intended as an approximate guide for those not fully conversant with the metric measurements. All measurements have been taken using a sonic tape measure and therefore may be subject to a small margin error.

We may refer you to recommended providers of ancillary services such as Conveyancing, Financial Services, Insurance and Surveying. We may receive a commission payment fee or other benefit (known as a referral fee) for recommending their services. You are not under any obligation to use the services of the recommended provider. The ancillary service provider may be an associated company of Lauristons Ltd.