



Claremont Road,  
(from) PCM £425 (from) PCM

complete   
ESTATE AGENTS

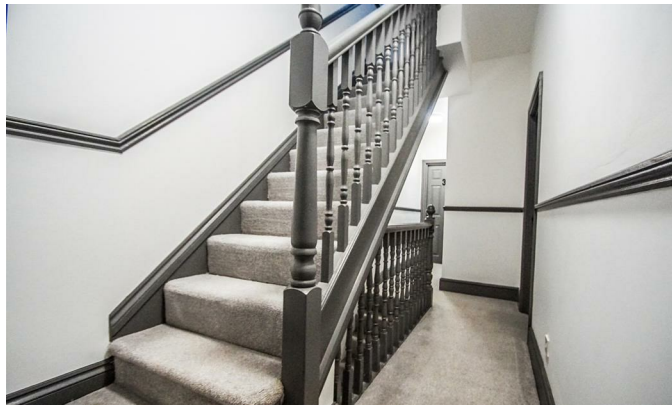


# Claremont Road, , Rugby

Room to rent in shared house- Use the virtual tour link- <https://my.matterport.com/show/?m=B1Zkw7T4URP> my.matterport.com/show/?m=B1Zkw7T4URP

Brand new refurbished house in Claremont Road central Rugby close to the station and minutes from town. Very stylish co-living property with a large single room available (No 2) at £420 per month and two double bedrooms (No1 & 3) available at £440 per month. All inclusive of bills and access to 350mb wifi. Warm house with a local shop less than a 1-minute walk. Communal bathroom, downstairs WC and large communal space. Must be working. (for double rooms -£25 a week extra for a 2nd occupier)









Energy Efficiency Rating		
	Current	Potential
Very energy efficient - lower running costs		
(92 plus) <b>A</b>		
(81-91) <b>B</b>		
(69-80) <b>C</b>		
(55-68) <b>D</b>		
(39-54) <b>E</b>		
(21-38) <b>F</b>		
(1-20) <b>G</b>		
Not energy efficient - higher running costs		
<b>England &amp; Wales</b>	EU Directive 2002/91/EC	

Environmental Impact (CO <sub>2</sub> ) Rating		
	Current	Potential
Very environmentally friendly - lower CO <sub>2</sub> emissions		
(92 plus) <b>A</b>		
(81-91) <b>B</b>		
(69-80) <b>C</b>		
(55-68) <b>D</b>		
(39-54) <b>E</b>		
(21-38) <b>F</b>		
(1-20) <b>G</b>		
Not environmentally friendly - higher CO <sub>2</sub> emissions		
<b>England &amp; Wales</b>	EU Directive 2002/91/EC	

Misrepresentation Act 1967 - These particulars are believed to be correct but their accuracy is not guaranteed nor do they form part of any contract.

19 Denby Buildings, Regent Grove, Leamington Spa, Warwickshire, CV32 4NY  
T: 01926 887723  
[sales@complete247.co.uk](mailto:sales@complete247.co.uk)  
[www.complete247.co.uk](http://www.complete247.co.uk)

**complete** ● ● ●  
ESTATE AGENTS