



1 Turnpike, Moulton, Northampton, NN3 7DJ

£285,000

Freehold

A stunning three bedroom semi detached house with a single garage which is located in this popular village location of Moulton. The accommodation comprises Entrance hall, kitchen/breakfast room, lounge/dining room, cloakroom, master bedroom with en suite, two further bedrooms, bathroom, front and rear gardens, off road parking, single garage.

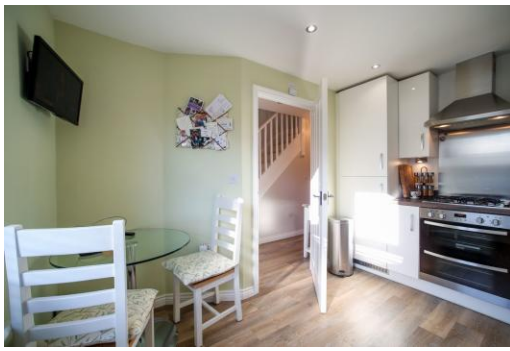
Northampton

10 Bridge Street, Northampton, NN1 1NW

T: 01604 624424

Offices also located in Daventry

stonhills.co.uk



ENTRANCE HALL

Stairs rising to first floor landing, radiator.

KITCHEN/BREAKFAST ROOM

Upvc double glazed window to front elevation, fitted in a range of base and wall mounted units with work surface over and inset sink with mixer tap over. Integrated appliances to include single oven, gas hob and extractor hood over. Radiator.

LOUNGE/DINING ROOM

Upvc double glazed French Doors to rear elevation, giving access to the rear garden, radiator and TV point



CLOAKROOM

Fitted in a two piece suite to comprise low level WC and wash hand basin.

FIRST FLOOR LANDING

Stairs rising to second floor landing.

BEDROOM TWO

Upvc double glazed window to rear elevation, radiator.

BEDROOM THREE

Upvc double glazed window to front elevation, radiator.

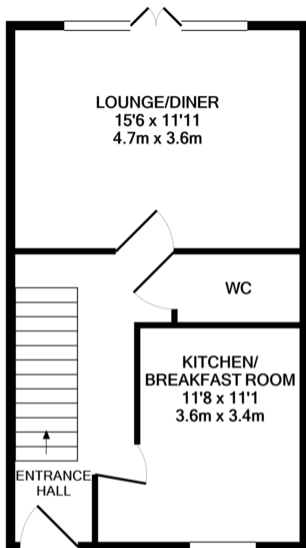
BATHROOM

Fitted in a three piece suite to comprise low level wc ,wash hand basin and bath.

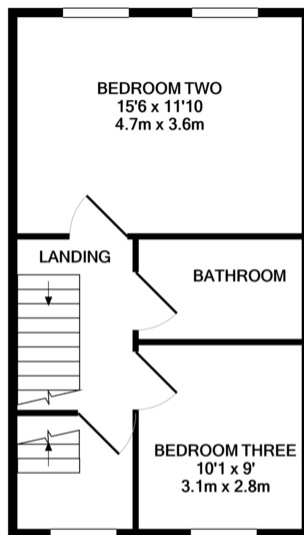
MASTER BEDROOM

Stairs rising from first floor landing, upvc double glazed window to front elevation, fitted wardrobes, radiator and door to.

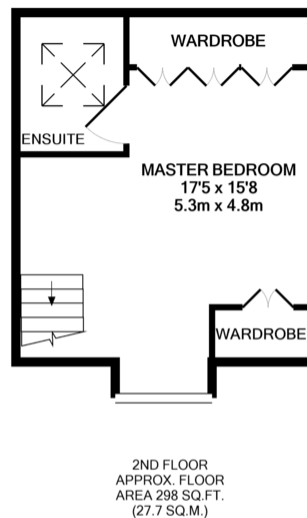
%epcGraph_c_1_255%



GROUND FLOOR
APPROX. FLOOR
AREA 427 SQ.FT.
(39.6 SQ.M.)



1ST FLOOR
APPROX. FLOOR
AREA 427 SQ.FT.
(39.6 SQ.M.)



2ND FLOOR
APPROX. FLOOR
AREA 298 SQ.FT.
(27.7 SQ.M.)

TURNPIKE, NORTHAMPTON
TOTAL APPROX. FLOOR AREA 1152 SQ.FT. (107.0 SQ.M.)

Whilst every attempt has been made to ensure the accuracy of the floor plan contained here, measurements of doors, windows, rooms and any other items are approximate and no responsibility is taken for any error, omission, or mis-statement. This plan is for illustrative purposes only and should be used as such by any