



Carlyle Road, W5

£975,000

An exceptional Edwardian semi-detached house which is arguably one of the best properties to come onto the market locally this year. With five bedrooms, a host of Period features and a fabulous rear garden.



Arranged over three floors, this excellent home occupies over 1600 sq.ft / 150 sq.m of well balanced accommodation.

On the ground floor there is a reception hall approached by a smart front door, two interconnecting reception rooms with a feature fireplace and orate coving and cornice, and a simply stunning kitchen/dining room which has been extended right across the rear and to the side.

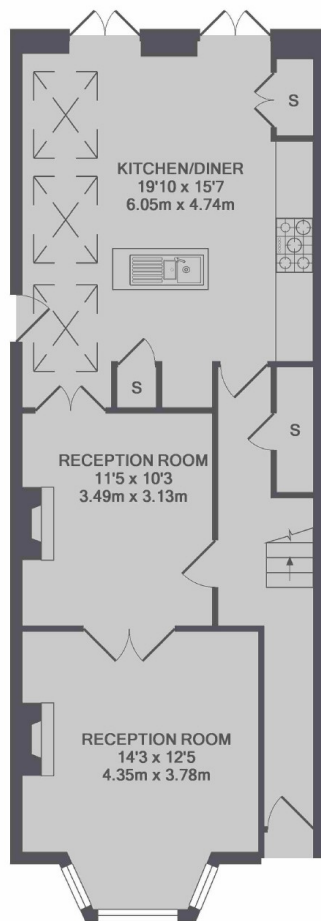
On the two upper floors are the five good sized bedrooms (master with en suite shower room), the stylish main bathroom plus an additional shower room to the top floor.

Outside to the rear of the circa 60 ft garden is a well built annex suitable for use as a home office or games room.

Located in an increasingly popular area, well positioned for the Piccadilly line tube at Northfields and South Ealing station and excellent local schools including Little Ealing primary school.

- Edwardian • Five Bedrooms • Interconnecting Reception Rooms •
- Kitchen/Dining Room • Garden Annex • Little Ealing School •

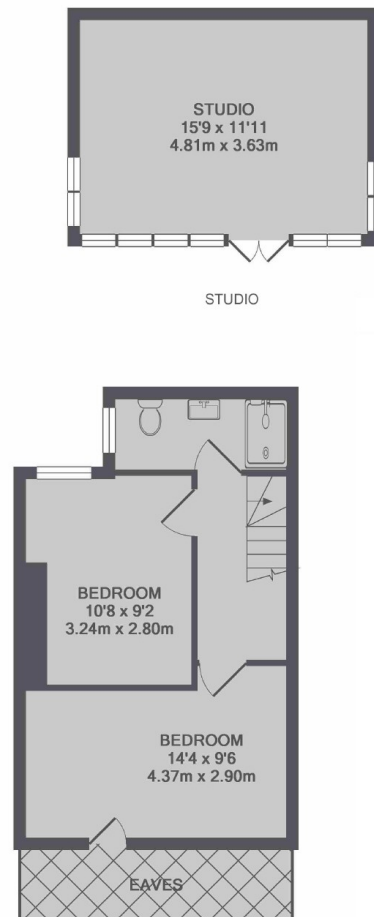




GROUND FLOOR



1ST FLOOR



2ND FLOOR

TOTAL APPROX. FLOOR AREA 1621 SQ.FT. (150.6 SQ.M.)
STUDIO TOTAL APPROX. FLOOR AREA 188 SQ.FT. (17.5 SQ.M.)

Robertson Smith & Kempson Northfields Sales
116 Northfield Avenue,
London, W13 9RT
020 8566 2340
northfieldssales@robertsonsmithandkempson.co.uk

Energy Rating: D. We aim to make our particulars both accurate and reliable. However they are not guaranteed; nor do they form part of an offer or contract. If you require clarification on any points then please contact us, especially if you're traveling some distance to view. Please note that appliances and heating systems have not been tested and therefore no warranties can be given as to their good working order.