

# SNELLERS

ESTATE AGENTS

---



**Heathfield North, TW2**

**£875,000**

An incredibly attractive three double bedroom Victorian family home, situated on the ever popular and sought after Heathfield North.





An incredibly attractive three double bedroom Victorian family home, situated on the ever popular and sought after Heathfield North.

Having been tastefully altered, improved and extended by the current owners, this house combines the much desired blend of contemporary finish and period charm with particular focus of the maximisation of space and room sizes to get the most of this stunning house. Externally the property boasts a smartly landscaped and well maintained garden. Further benefits include a range of high end appliances and high quality finish throughout.

Heathfield North is a highly desirable road conveniently located in central Twickenham with its wide variety of shops, bars and restaurants and just 0.4 miles to the station

- Victorian Family Home • Three Double Bedrooms • Extended •
- Semi Detached • Sought After Location • Large Rear Garden •



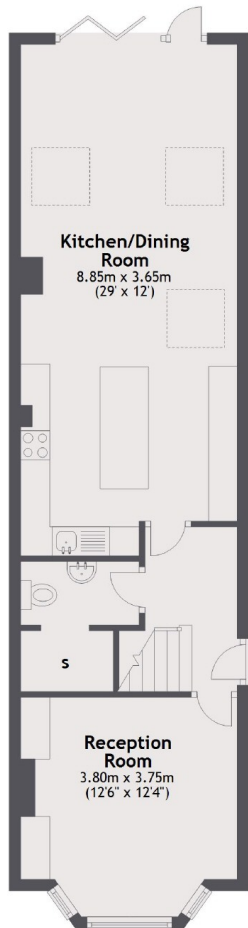




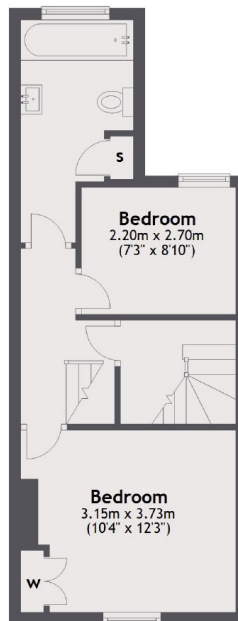
# SNELLERS

ESTATE AGENTS

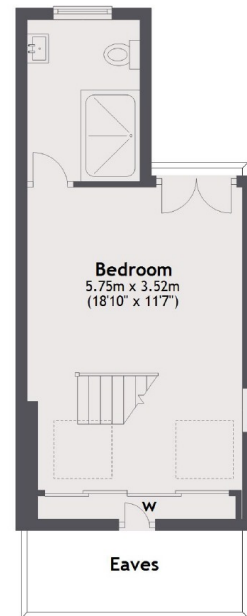
Ground Floor



First Floor



Second Floor



Total area: approx. 115.3 sq. metres (1240.8 sq. feet)

Snellers Twickenham Sales  
74 Heath Road  
Twickenham  
TW1 4BW  
020 8892 5555  
twickenhamsales@snellers.co.uk

Energy Rating: D We aim to make our particulars both accurate and reliable. However they are not guaranteed; nor do they form part of an offer or contract. If you require clarification on any points then please contact us, especially if you're traveling some distance to view. Please note that appliances and heating systems have not been tested and therefore no warranties can be given as to their good working order