



Hopton Road, SW16

£535,000

An extremely well presented two bedroom ground floor Victorian conversion flat, which has recently been renovated throughout to a high standard.

- Two Double Bedrooms
- Two Bathrooms
- Private Garden
- Share of Freehold
- Sought After Location
- Recently Renovated Victorian Conversion

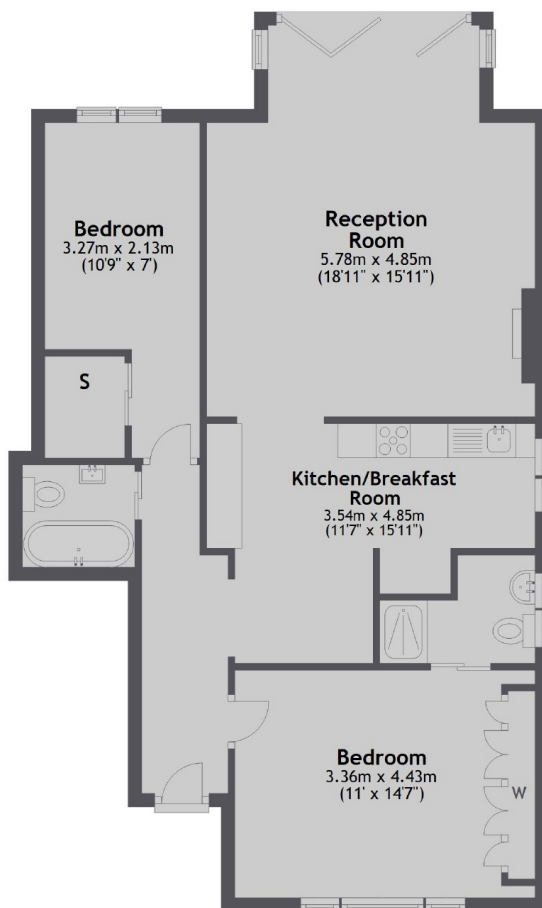


The property boasts a variety of original features, a working log burner and hardwood floors. There is large living space with bi-fold doors to a private west facing patio garden, making an excellent place for entertaining. Further benefits include off street parking, ample storage, side access and its own front door.

Hopton Road is located just off of Streatham High Road which has excellent shopping and leisure facilities. Streatham mainline station provides onward journeys to Blackfriars and London Bridge whilst the open spaces of Streatham Common are also within close proximity.



Ground Floor



Total area: approx. 78.6 sq. metres (846.1 sq. feet)

Jacksons Streatham
1-3 De Montfort Parade
Streatham High Road
Streatham
London
SW16 1BU

Energy Rating: E We aim to make our particulars both accurate and reliable. However they are not guaranteed; nor do they form part of an offer or contract. If you require clarification on any points then please contact us, especially if you're traveling some distance to view. Please note that appliances and heating systems have not been tested and therefore no warranties can be given as to their good working order.