



Seer Green, Beaconsfield

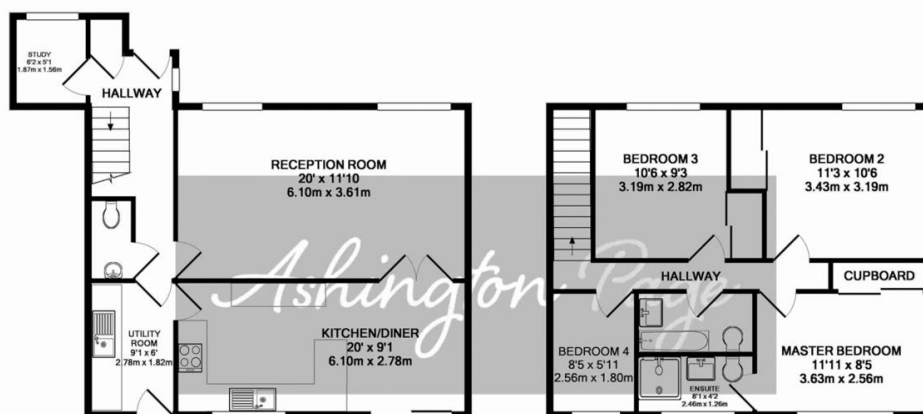
£1,750 pcm

Delightful and spacious four bedroom detached house. Large modern kitchen diner, lounge and dining area, separate utility room, study and downstairs cloakroom. Two modern bathrooms. Garage plus parking space. Garden and patio area. Walking distance to school, village shops and station. Furniture is optional. EPC rating D. Available December 2019.

Ashington Page

www.AshingtonPage.co.uk

LETTINGS & PROPERTY MANAGEMENT



Whilst every attempt has been made to ensure the accuracy of the floor plan contained here, measurements of doors, windows, rooms and any other items are approximate and no responsibility is taken for any error, omission, or mis-statement. This plan is for illustrative purposes only and should be used as such by any prospective purchaser. The services, systems and appliances shown have not been tested and no guarantee as to their operability or efficiency can be given.
Made with Metropix ©2019

Features –

- Walking distance to school and station
- Lovely outlook over communal gardens
- Garage and parking space
- Modern Kitchen / diner
- Modern Bathrooms
- Garden to the rear
- EPC rating D

For an appointment to view this property, please contact
Ashington Page Lettings on **01494 685 518**

Email Lettings@ashingtonpage.co.uk

4 Burkes Parade, Beaconsfield, Buckinghamshire, HP9 1NN

Agents Note

Whilst every care has been taken to prepare these sales particulars, they are for guidance purposes only. All measurements are approximate are for general guidance purposes only and whilst every care has been taken to ensure their accuracy, they should not be relied upon and potential buyers are advised to recheck the measurements

www.AshingtonPage.co.uk

Ashington Page

LETTINGS & PROPERTY MANAGEMENT