



Mayfield Avenue, W13

£985,000

Impressive five bedroom semi-detached house located on the south side of this sought after street.

Located in arguably the best spot in Northfields, close to the shops and ideally located for both Fielding and Mount Carmel Primary Schools and Elthorne Park High School. With easy access to Ealing Broadway.



Upon entering through the original front door you immediately notice how bright the house feels. The hallway leads through to the front reception with a bay window and feature fireplace. There is a utility room and guest WC before you come to the fantastic kitchen / dining room which has been fully extended with bi-folding doors to the south-facing rear garden.

Upstairs on the first floor there are three good sized bedrooms and the well fitted main bathroom. On the second floor we have the master bedroom with an en suite shower room and a further double bedroom.

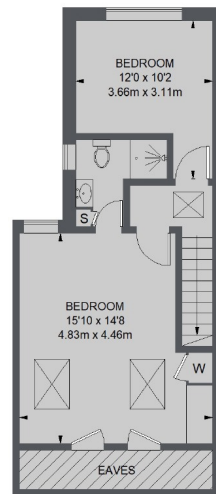
The well established 50ft rear garden is partly paved and partly laid to lawn.

Enviably location close to all amenities including Lammas Park and Northfields (Piccadilly Line) tube. With easy access to Ealing Broadway.

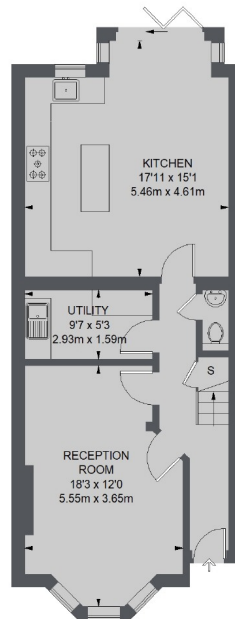
One of the best properties to come onto the market in 2019 so viewing is a must.

- Five Bedrooms • Edwardian Semi-Detached • Fully Extended •
 - South-Facing Garden • Piccadilly Line Tube • Excellent Local Schools •
-

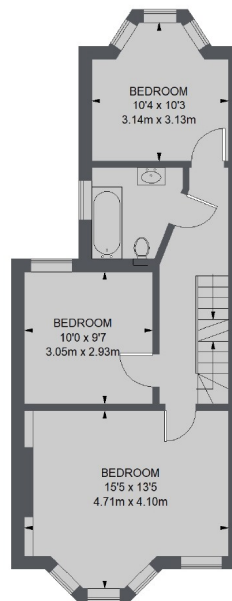




SECOND FLOOR



GROUND FLOOR



FIRST FLOOR

TOTAL APPROX. FLOOR AREA
(EXCLUDING EAVES)
1538 SQ. FT. (142.87 SQ. M.)

Robertson Smith & Kempson Northfields Sales
116 Northfield Avenue,
London, W13 9RT
020 8566 2340
northfieldssales@robertsonsmithandkempson.co.uk

Energy Rating: Tbc. We aim to make our particulars both accurate and reliable. However they are not guaranteed; nor do they form part of an offer or contract. If you require clarification on any points then please contact us, especially if you're traveling some distance to view. Please note that appliances and heating systems have not been tested and therefore no warranties can be given as to their good working order.