

# Chard

— Lettings —



## Lillie Road, SW6

£780 pw (£3,380 pcm)

This four bedroom, two bathroom Victorian period house on Lillie Road is spread over two floors with a large separate reception room, an eat-in family kitchen, large private garden and good storage space. The property is ideally located for local amenities and transport links.

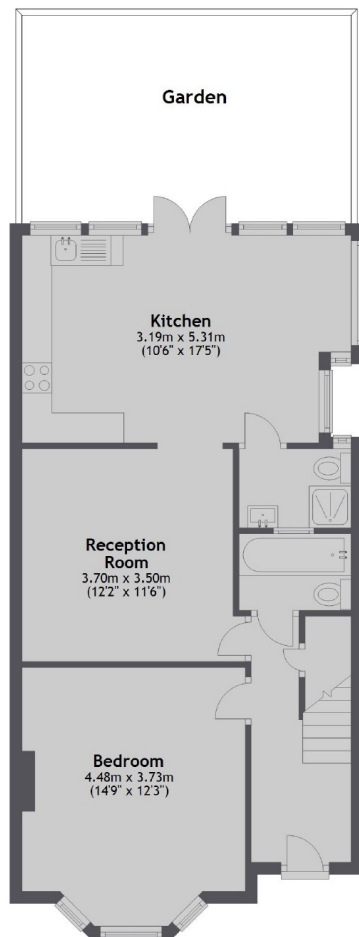
Lillie Road has a wide selection of bars, restaurants and local amenities with Munster Road and Fulham Road nearby. The nearest underground is Barons Court and West Brompton stations and many bus routes are also available on Lillie Road and Munster Road.

- Period Features • Four Bedrooms • Private Garden •

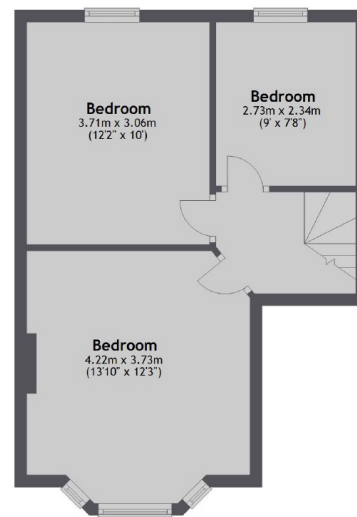
# Chard

— Lettings —

Ground Floor



First Floor



Total area: approx. 96.4 sq. metres (1037.9 sq. feet)

Chard Fulham  
5 Harwood Road,  
London, SW6 4QP  
020 7384 1400  
[fulhamlettings@chard.co.uk](mailto:fulhamlettings@chard.co.uk)

Energy Rating: E. We aim to make our particulars both accurate and reliable. However they are not guaranteed; nor do they form part of an offer or contract. If you require clarification on any points then please contact us, especially if you're traveling some distance to view. Please note that appliances and heating systems have not been tested and therefore no warranties can be given as to their good working order.