

heywoods



Bath Road

Silverdale, Newcastle, ST5 6QX

Asking Price Of £100,000



- **Mature Semi-Detached House**
- **Three Good Bedrooms**
- **Gardens To Front and Rear**
- **Parking For Two Cars & Carport**
- **Well Maintained And Presented**
- **Village Location, Good Road Links**
- **Gas Central Heating**
- **Upvc Double Glazing**
- **Dining Kitchen With Utility Off**
- **Affordable Family Home!**

The Accommodation:

ENTRANCE HALL Doors to lounge and kitchen, stairs to first floor.

REAR FACING LOUNGE 13' 2" x 13' 0" (4.01m x 3.96m)
A pleasant sitting room overlooking the garden.

KITCHEN/DINER 12' 8" x 10' 10" (3.86m x 3.3m) Fitted with a range of base and wall cupboards with work surfaces over, space for table and chairs, tiled floor. Door to;

UTILITY ROOM 10' 2" x 6' 0" (3.1m x 1.83m) Door to side, Appliance spaces and coat hooks, tiled floor;

FIRST FLOOR LANDING Doors to bedrooms and bathroom.

BEDROOM ONE 13' 0" x 11' 10" (3.96m x 3.61m)

BEDROOM TWO 10' 7" x 9' 4" (3.23m x 2.84m)

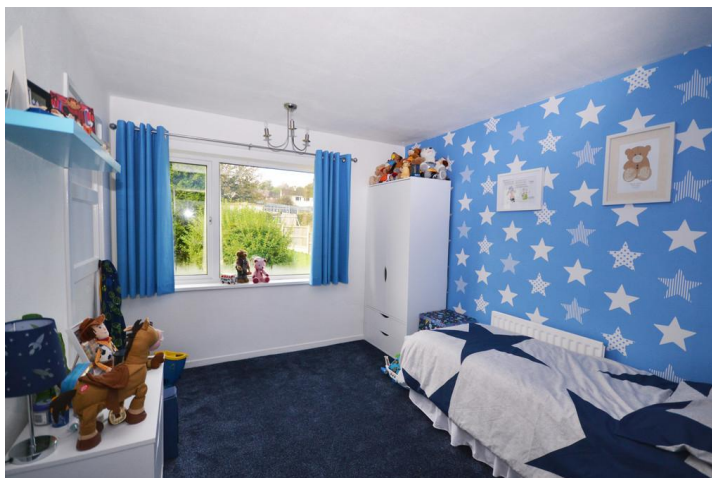
BEDROOM THREE 8' 8" x 8' 4" (2.64m x 2.54m)

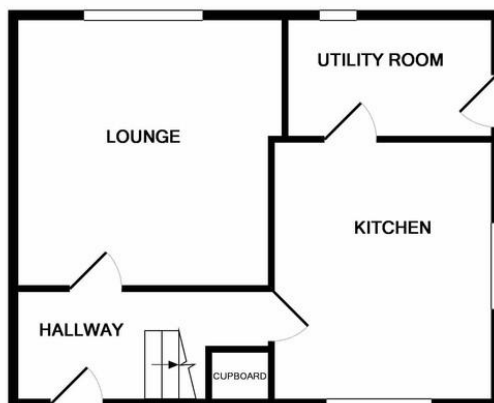
BATHROOM 5' 9" x 5' 6" (1.75m x 1.68m) Modern white suite and part tiled in contemporary ceramics

SEPARATE WC 5' 9" x 2' 9" (1.75m x 0.84m) Again part tiled, close coupled suite.

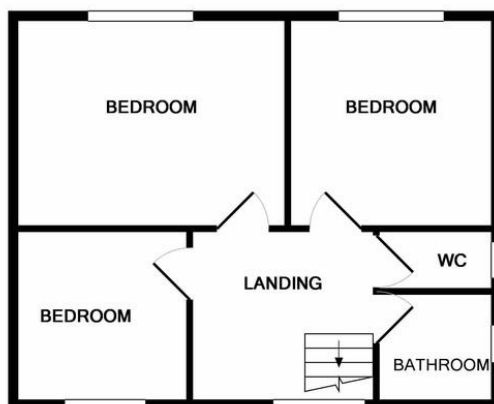
EXTERNALLY Front garden laid to lawn with fencing and hedging borders. Wide tarmac vehicle parking space leading to further parking space beneath a carport.

ENCLOSED REAR GARDEN A good sized garden ideal for a young family. With a west facing sunny aspect, useful covered store, lawned and flagged sitting out areas, concrete paths, fencing borders.





GROUND FLOOR



1ST FLOOR

Whilst every attempt has been made to ensure the accuracy of the floor plan contained here, measurements of doors, windows, rooms and any other items are approximate and no responsibility is taken for any error, omission, or mis-statement. This plan is for illustrative purposes only and should be used as such by any prospective purchaser. The services, systems and appliances shown have not been tested and no guarantee as to their operability or efficiency can be given
Made with Metropix ©2019

High
demand
for **similar**
properties

to BUY & LET

heywoods

EPC graph coming soon...

The Estate Offices
Blackfriars Road
Newcastle-under-Lyme
ST5 2EB

T. 01782 617343
E. u2us@heywoodsproperty.co.uk
W. www.heywoodsproperty.co.uk

Agents Note: Whilst every care has been taken to prepare these sales particulars, they are for guidance purposes only. All measurements are approximate and for general guidance purposes only and whilst every care has been taken to ensure their accuracy, they should not be relied upon and potential buyers are advised to recheck the measurements