

Chard

Lettings



Chelsea Embankment, SW3

£1,050 pw (£4,550 pcm)

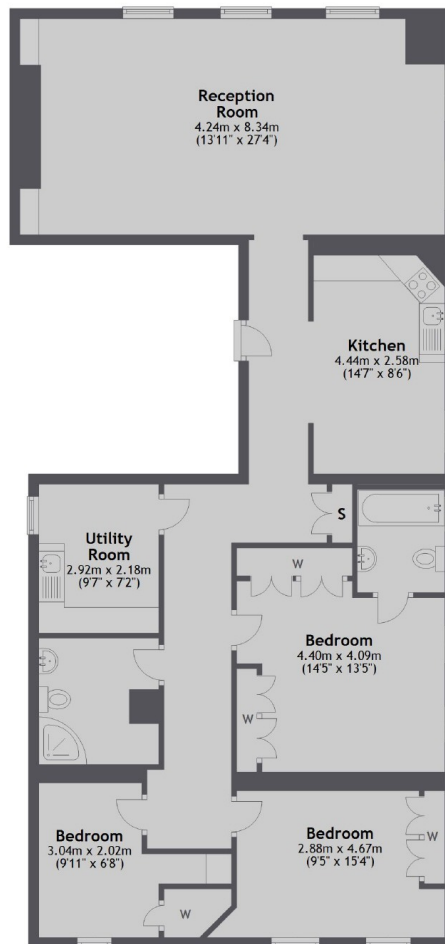
Situated on Chelsea Embankment this three bedroom second floor flat is moments away from the River Thames, Battersea Park and its famous peace pagoda. The property has spacious reception with wood flooring, period features and fantastic river views. You also have a modern fitted kitchen, two bathrooms and good storage space.

Sloane Square tube station (District & Piccadilly line) is close by as well as many bus routes leading into the city. Kings Road is also close by with a selection of popular shops, restaurants and bars all on your doorstep and several Chelsea public parks and green spaces.

Chard

— Lettings —

Second Floor



Total area: approx. 124.9 sq. metres (1344.9 sq. feet)

Chard Fulham
5 Harwood Road,
London, SW6 4QP
020 7384 1400
fulhamlettings@chard.co.uk

Energy Rating: D. We aim to make our particulars both accurate and reliable. However they are not guaranteed; nor do they form part of an offer or contract. If you require clarification on any points then please contact us, especially if you're traveling some distance to view. Please note that appliances and heating systems have not been tested and therefore no warranties can be given as to their good working order.