

heywoods



Ironbridge Drive

Newcastle, ST5 6ER

£165,000



- Spacious Modern End town House
- Sought After position
- Three Bedrooms
- Ensuite and Dressing Area
- Excellent Lounge
- Diningroom with French Windows
- Cloaks/WC
- Large Parking Area
- South Facing, Private Garden
- Double Glazed, Gas Central Heated

The Accomodation

ENTRANCE HALL Double Glazed door, door to dining room and door to;

CLOAKS/WC wash basin and close-coupled suite

LOUNGE 15' 8" x 10' 10" (4.78m x 3.3m) Pleasant aspect to front and side, Double Doors to;

DINING ROOM 14' 1" x 10' 1" (4.29m x 3.07m) French windows overlooking rear garden, door to understairs store with useful broom cupboard space and coat hooks, wood effect strip flooring.

LANDING Doors to first floor rooms

MASTER BEDROOM 11' 0" x 10' 6" (3.35m x 3.2m) Archway to dressing area with three door wardrobe and door to;

ENSUITE SHOWER ROOM 5' 5" x 5' 1" (1.65m x 1.55m) Suite comprising shower cubicle with glass shower doors, pedestal wash hand basin, close coupled w.c., walls part tiled.

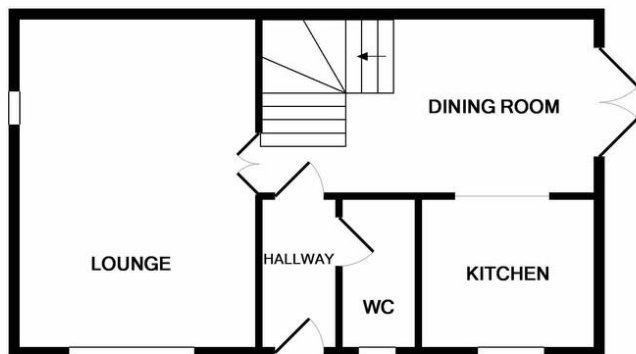
BEDROOM TWO 8' 10" x 7' 4" (2.69m x 2.24m)

BEDROOM THREE 9' 0" x 7' 9" (2.74m x 2.36m) plus Door recess, Double Wardrobe.

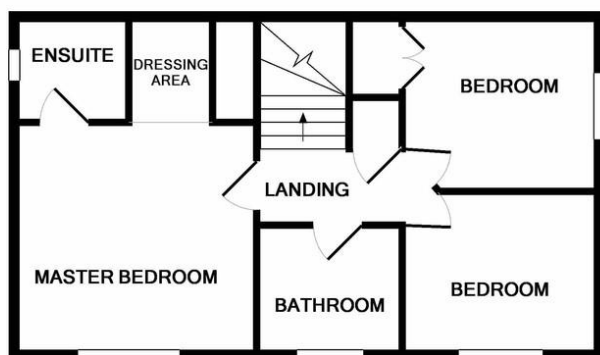
FAMILY BATHROOM 6' 5" x 5' 6" (1.96m x 1.68m) part tiled walls, suite comprising panelled bath, pedestal wash hand basin, close coupled w.c., shaver point.

EXTERNALLY To the front the property is favourably positioned, overlooking open fields with lawned area to front and gravelled corner shrubbery, the vehicle parking and hard standing gives ample space for approximately four vehicles. A gate leads to the rear garden enclosed by fencing borders with flagged sitting out area and pathway, two shed bases and central circular sitting out area with gravelled borders.





GROUND FLOOR

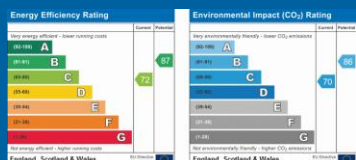


1ST FLOOR

Whilst every attempt has been made to ensure the accuracy of the floor plan contained here, measurements of doors, windows, rooms and any other items are approximate and no responsibility is taken for any error, omission, or mis-statement. This plan is for illustrative purposes only and should be used as such by any prospective purchaser. The services, systems and appliances shown have not been tested and no guarantee as to their operability or efficiency can be given
Made with Metropix ©2019

High
demand
for **similar**
properties
to **BUY & LET**

heywoods



The Estate Offices
Blackfriars Road
Newcastle-under-Lyme
ST5 2EB

T. 01782 617343
E. u2us@heywoodsproperty.co.uk
W. www.heywoodsproperty.co.uk

Agents Note: Whilst every care has been taken to prepare these sales particulars, they are for guidance purposes only. All measurements are approximate are for general guidance purposes only and whilst every care has been taken to ensure their accuracy, they should not be relied upon and potential buyers are advised to recheck the measurements