

# SNELLERS

ESTATE AGENTS



## Gibbon Road, KT2

£2,650 PCM

This detached Victorian house is the ideal family home, with reception rooms, modern kitchen, three bedrooms and two bathrooms as well as a large rear garden.

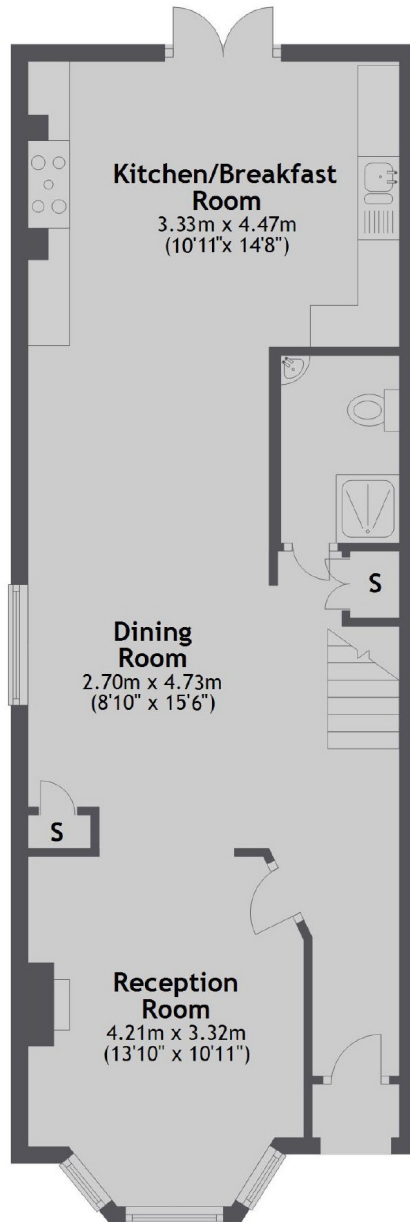
Gibbon Road is near to highly sought after schools, as well as being an easy walk from Kingston town centre with its shops, restaurants and Mainline Station.

- Detached Victorian House • Large Rear Garden • Three Bedrooms •
- Two Reception Rooms • Two Bathrooms • Central Location •

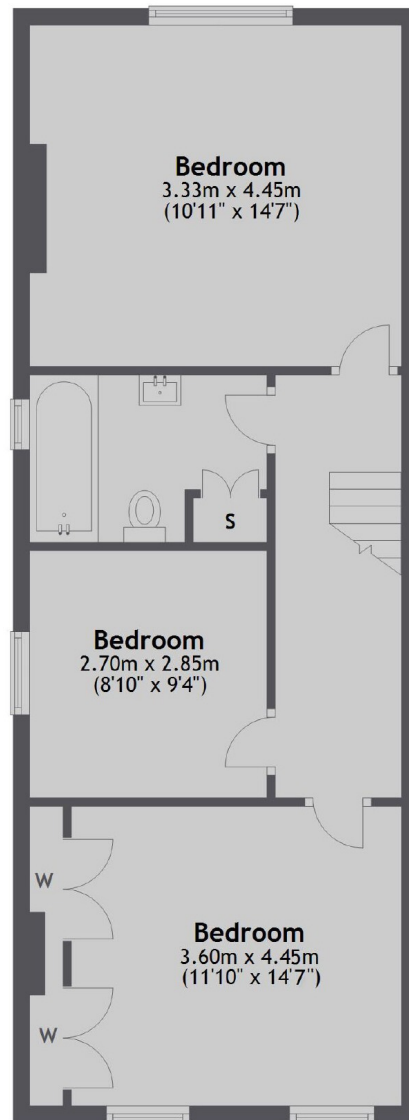
# SNELLERS

ESTATE AGENTS

Ground Floor



First Floor



Total area: approx. 106.4 sq. meters (1145 sq. feet)

Snellers Kingston Lettings  
17-21 Richmond Road  
Kingston  
KT2 5BW  
020 8546 0505  
[kingstonlettings@snellers.co.uk](mailto:kingstonlettings@snellers.co.uk)

Energy Rating: We aim to make our particulars both accurate and reliable. However they are not guaranteed; nor do they form part of an offer or contract. If you require clarification on any points then please contact us, especially if you're traveling some distance to view. Please note that appliances and heating systems have not been tested and therefore no warranties can be given as to their good working order