



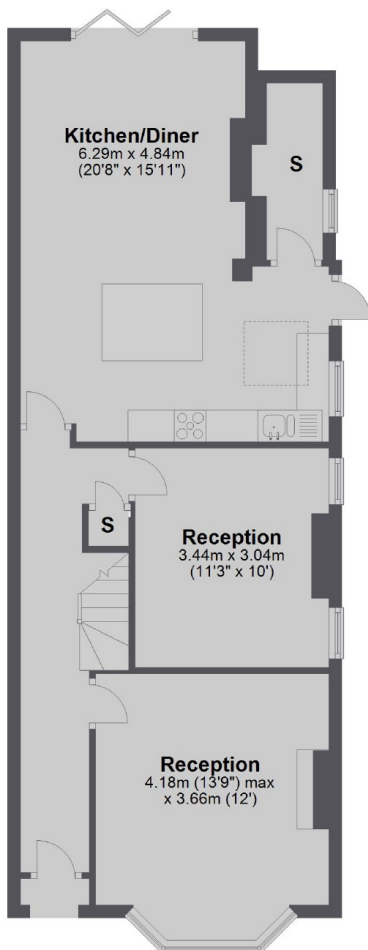
Grove Avenue, W7

£850,000

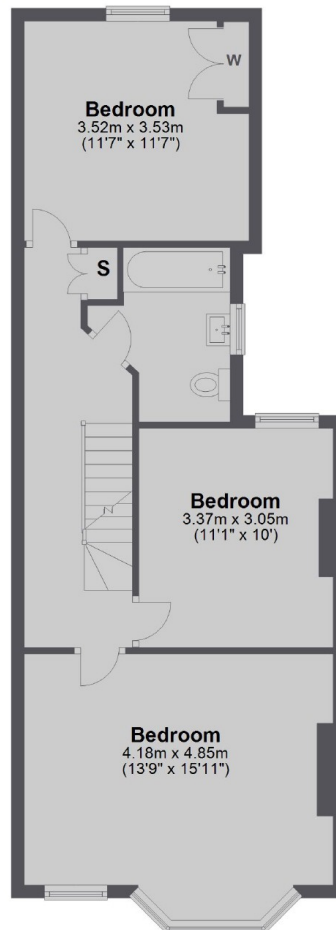
This 'halls adjoining' extended four double bedroom semi detached house situated in this enviable location is offered onto the market with no onward chain.

Offering over 1500 sq ft including an abundance of period features and a well proportioned layout to enhance natural light throughout this substantial property.

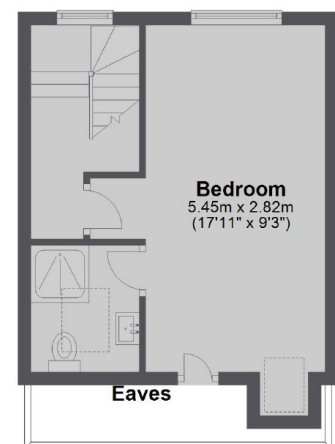
Ground Floor



First Floor



Second Floor



Total area: approx. 147.4 sq. metres (1586.2 sq. feet)

Robertson Smith & Kempson Hanwell Sales
69 Greenford Avenue,
London, W7 1LL
020 8566 2339
hanwellsales@robertsonsmithandkempson.co.uk

Energy Rating: . We aim to make our particulars both accurate and reliable. However they are not guaranteed; nor do they form part of an offer or contract. If you require clarification on any points then please contact us, especially if you're traveling some distance to view. Please note that appliances and heating systems have not been tested and therefore no warranties can be given as to their good working order.