

FLETCHERS

ESTATE AGENTS



Acton Lane, W4

£550,000

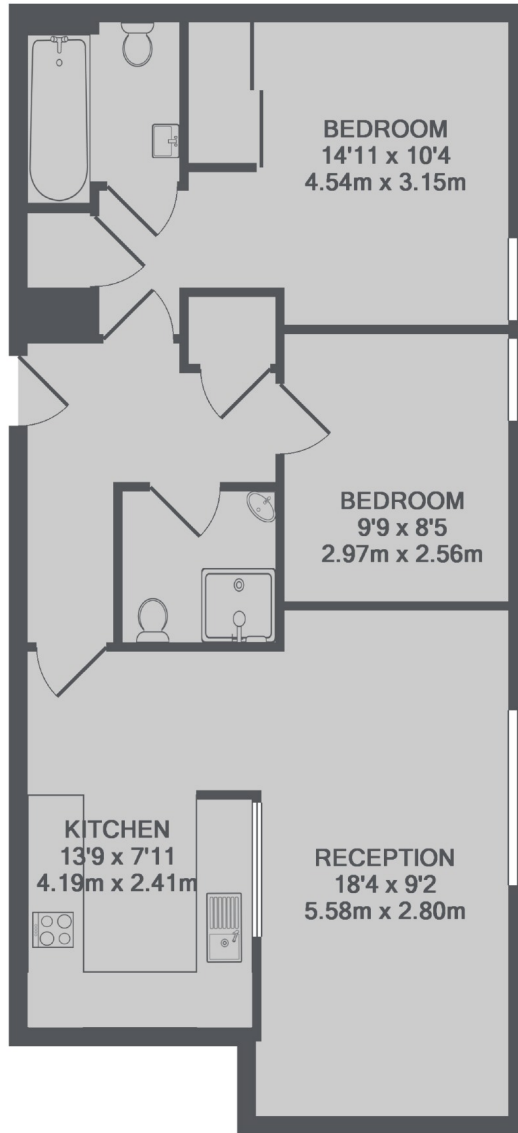
A beautifully presented two double bedroom purpose built modern flat with two bath/shower rooms and an 18' open plan kitchen reception. This flat also benefits from an allocated gated parking space and a share of the freehold.

Chiswick View is a private modern development on Acton Lane, within half a mile of Chiswick Park station and within a quarter of a mile from South Acton station.

- Two Bedrooms • Two Bathrooms • Gated Parking • Open Plan Living • Storage • Modern Kitchen •

FLETCHERS

ESTATE AGENTS



TOTAL APPROX. FLOOR AREA 664 SQ.FT. (61.6 SQ.M.)

Fletchers Chiswick Turnham Green
Sales
58 Turnham Green Terrace, London, W4
1QP
020 8987 3000

Energy Rating: D. We aim to make our particulars both accurate and reliable. However they are not guaranteed; nor do they form part of an offer or contract. If you require clarification on any points then please contact us, especially if you're traveling some distance to view. Please note that appliances and heating systems have not been tested and therefore no warranties can be given as to their good working order.