



The energy that engulfs you when you walk through the door of this utterly stunning mews house, is overwhelming.

Rarely will you come across a home that both excites the senses and provides a place to relax - all at the same time.

- Stunning home situated in a quiet cul-de-sac
- Situated opposite Kensington Gardens and moments from Hyde Park and The Albert Hall
- Entrance hall
- Stunning master bedroom with fireplace, full ensuite marble bathroom and built-in wardrobes
- Two further double bedrooms both with ensuite shower rooms and built-in wardrobes
- Spacious living room with floor to ceiling windows and wooden floor
- Kitchen with marble worktops and all machines
- Guest cloakroom
- Private parking outside the property
- Air conditioning throughout
- Daily housekeeping
- Cottage garden with gardener
- Available now for a long let



7 RESTON PLACE, LONDON, SW7 5DY

SUMMARY

- 3 Bedrooms
- 3 bathrooms
- Spacious reception room with doors to garden
- Kitchen
- Excellent storage throughout
- Allocated parking space
- Garden
- Prestigious quiet mews location
- Short walk to Kensington Gardens, Hyde Park, The Albert Hall and High Street Kensington Tube Station

£2950 per week

Fully furnished

Daily Housekeeping included

Gardener included

THE PROPERTY

This sensational home is far more boutique hotel than high-end rental. Furnished to an exceptional standard with every inch of the house designed to provide both a classical and informal atmosphere, the property is full of intuitive surprises at every turn.

Tucked out of the way from the hustle and bustle, yet moments away from Hyde Park, The Albert Hall and Kensington High Street, this is a perfect location for a couple, but for those flying solo, there is masses to do on your doorstep, and it's a lock and go situation; for those staying at home while their partners travel, there is high security, excellent shopping and plenty to do to ward off that ultimate relationship killer, loneliness.

The kitchen would appeal to the inner chef in anyone, and the beautiful lounge has doors leading on to the very attractive garden which wouldn't look out of place at Chelsea.

All the bedrooms are doubles, the bathrooms immaculate, and the storage spaces (and their finish) will make you very happy indeed.

THE AREA

Nestled in a quiet cul-de-sac within moments from Hyde Park and The Albert Hall, this property is incomparable to any other homes in the area.

Culture abounds in this area, with the grand Albert Hall just down the road to the dinosaurs at The Natural History Museum, and for those who prefer retail therapy, the chic boutiques on Kensington High Street and the popular antique stores on Kensington Church Street, will keep you very busy.

If it's the open green spaces you're after, then you can't go wrong. The property is situated a stone's throw from Kensington Gardens and Hyde Park.

Heathrow is easily accessible and High Street Kensington Tube is less than half a mile away.

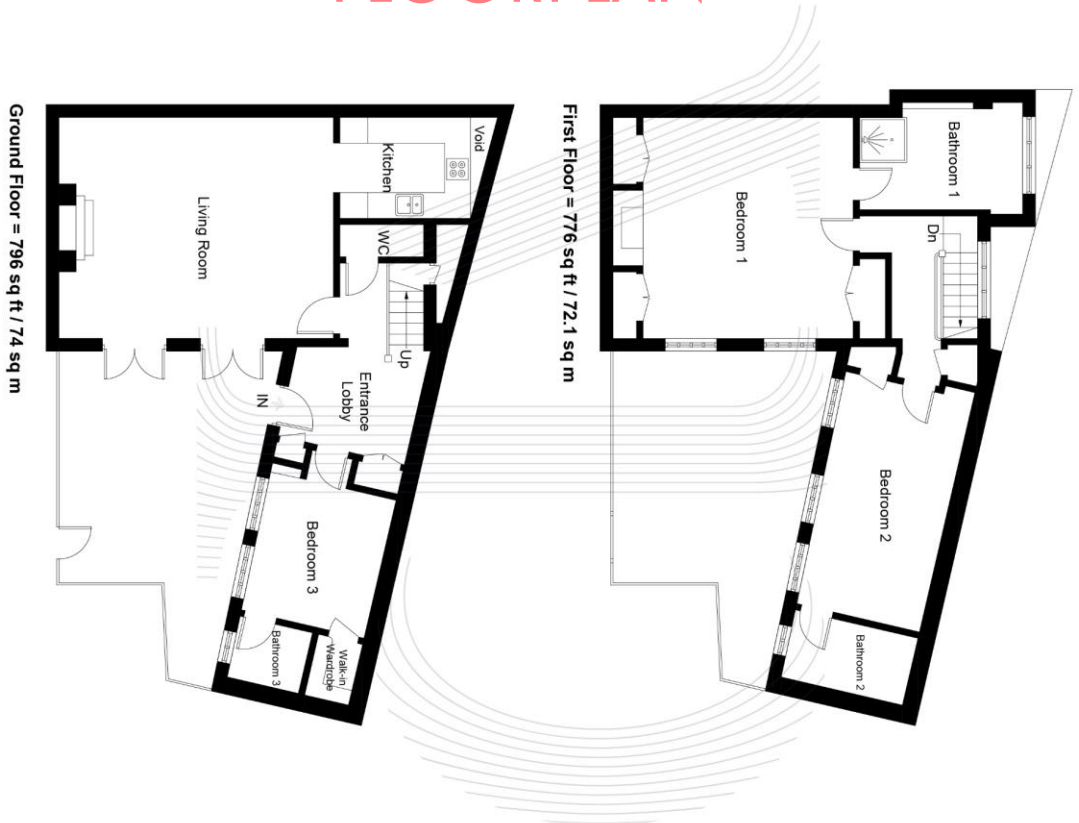
There is simply so much to explore.



Reston Place, London, SW7

Approximate Gross Internal Area = 146.1 sq m / 1572 sq ft

FLOORPLAN



Measurements are approximate & only for illustrative purposes. Not to scale.

TERMS

Local Authority:

The Royal Borough of
Kensington and Chelsea

Council Tax Band H -
£2391.10 2019/2020

