



25 Moses Mead  
Swindon, SN5 4GA





## 25 Moses Mead, Swindon, SN5 4GA

A stunning **FOUR BEDROOM DETACHED** family home in **SHOW HOME CONDITON** **THROUGHOUT**. Benefiting from **OPEN VIEWS** to the front, **BEAUTIFULLY LANDSCAPED SOUTH FACING GARDEN** and **GARAGE** plus **TANDEM DRIVEWAY PARKING** for **THREE VEHICLES**.

- Detached
- Four Bedrooms
- Open Views to Front
- Show Home Condition
- Sitting Room
- Kitchen/dining Room
- Cloakroom
- En suite
- Family Bathroom
- Beautiful Garden
- Garage

£355,000



### Description

A stunning FOUR BEDROOM DETACHED family home in SHOW HOME CONDITION THROUGHOUT. Benefiting from OPEN VIEWS to the front, BEAUTIFULLY LANDSCAPED SOUTH FACING GARDEN and GARAGE plus TANDEM DRIVEWAY PARKING for THREE VEHICLES.

### Situation

Situated on the edge of Common Platt located on the North West outskirts of Swindon. There are local amenities close by including retail park and reputable schooling. There is excellent access to both Junction 15 and 16 of the M4 Motorway, A417, A419, A420 & the Great Western Hospital and Swindon Town Centre c.4 miles with mainline railway links to London Paddington and Bristol.

### Property Information

Tenure : Freehold

Gas Central Heating

Council Tax Band 'E'

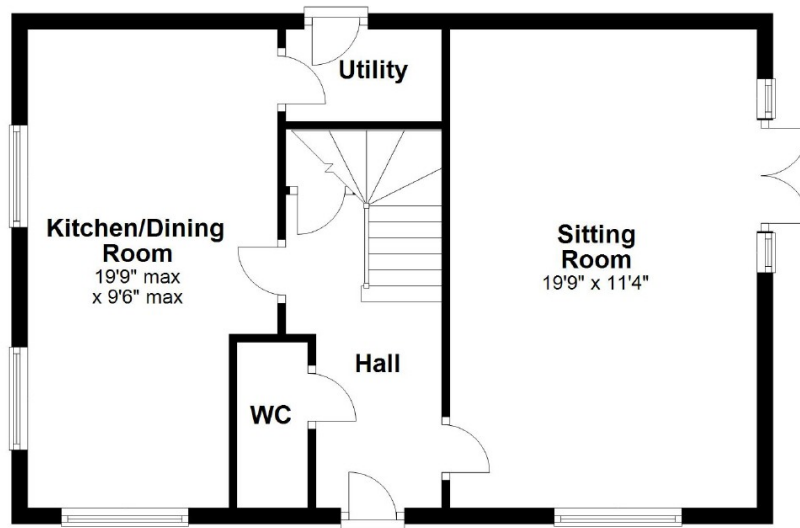
EPC 'B'



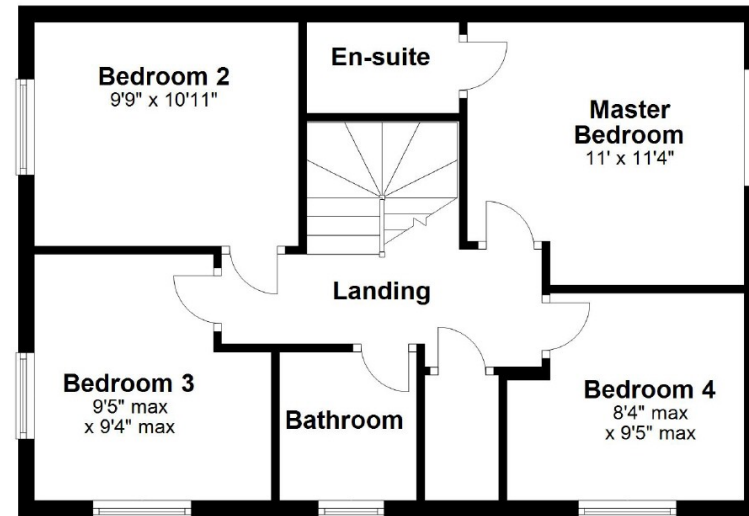
These particulars, whilst believed to be accurate are set out as a general outline only for guidance and do not constitute any part of an offer or contract. Intending purchasers should not rely on them as statements of representations of fact, but must satisfy themselves by inspection or otherwise as to their accuracy. No person in this firm's employment has the authority to make or give any representation or warranty in respect of the property. All measurements and distances are approximate only.



**Ground Floor**



**First Floor**



Unit B, Millgrove House, 59 Millgrove Street, Redhouse, Swindon,  
Wiltshire, SN25 2FW  
Tel: 01793 683144  
Fax:

[www.strakers.co.uk](http://www.strakers.co.uk)

■ Chippenham  
■ Corsham

■ New Homes  
■ Malmesbury

■ Swindon  
■ Devizes

■ Auction  
■ Lettings