



MORTIMER CRESCENT, NW6 5NX £1,050,000 Subject to contract

A well presented upper maisonette entered from the raised ground floor of this attractive period house. The apartment provides well planned three double bedroom accommodation arranged over the first and second floors retaining a number of period features and boasting a superb intercommunicating reception area with a stylish eat in kitchen/diner.

Three Bedrooms | Bathroom | Shower Room | Reception Room | Kitchen/Dining Room | Eaves Storage | Independent Gas Central Heating

winkworth.co.uk/st-johns-wood

Winkworth

See things differently.

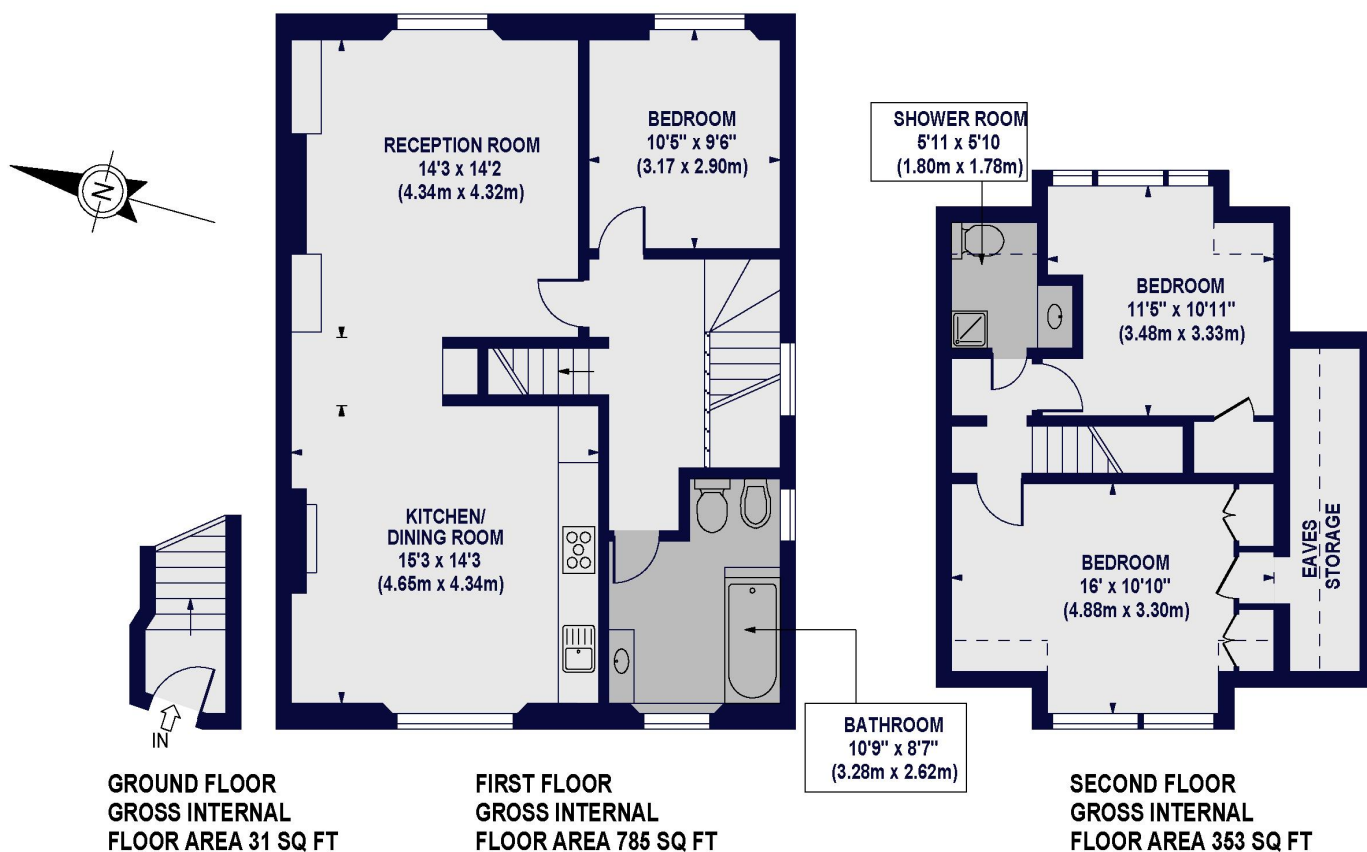


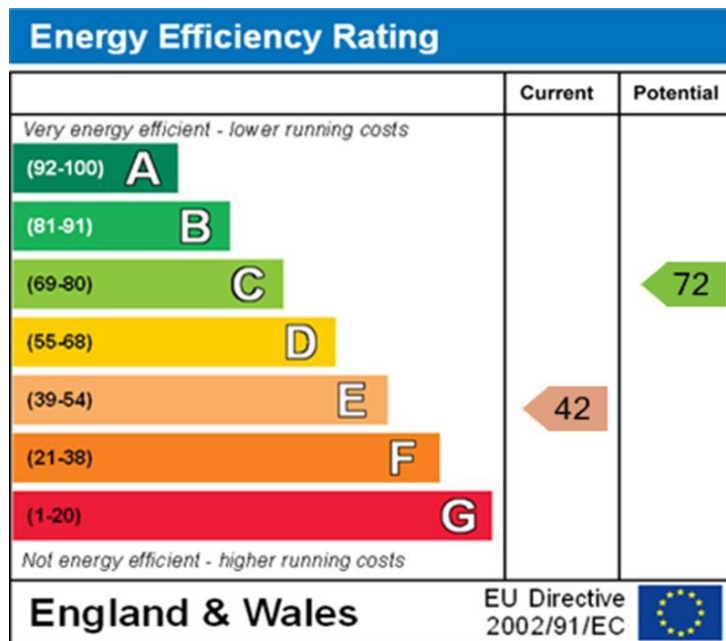
MORTIMER CRESCENT, ST JOHN'S WOOD, NW6 5NX

Approx. Gross Internal Floor Area 1169 sq ft. / 108.60 sq.m

Approx. Gross Internal Floor Area 1280 sq ft. / 118.91 sq.m

(Including Restricted Heights)





Tenure:	Leasehold	NOTES:
Term:	125 years from 29/09/1981	
Service Charge:	TBC	
Current Ground Rent:	TBC	

Where no figures are shown, we have been unable to ascertain the information. All figures that are shown were correct at the time of printing.

NB: These particulars are not an offer or contract, nor part of one. You should not rely on statements by Winkworth in the particulars or by word of mouth or in writing "information" as being factually accurate about the property, its condition or its value. Neither Winkworth nor any joint agent has any authority to make any representations about the property, and accordingly any information given is entirely without responsibility on the part of the agents, seller(s) or lessor(s). These particulars are prepared on the basis of the information supplied by our client and are a rough guide for information only. The photographs show only certain parts of the property. We are not able to check all of the information and therefore are unable to guarantee accuracy. All interested parties are therefore advised to undertake all necessary inspections and checks that they deem appropriate. Where displayed, the square footage is taken from the floor plans, which are created by an independent supplier. These measurements are approximate and included for illustrative purposes only. The measurements may vary. Winkworth does not make any representation as to the accuracy of these measurements and you should seek to verify them for yourself. Winkworth accept no liability for any loss you may suffer if you rely on these measurements. All fixtures and fittings, whether fitted or not are deemed removable by the vendor unless stated. Any reference to alterations to, or use of, any part of the property does not mean that any necessary planning, building regulations or other consent has been obtained. Amenities and appliances have not been tested.

St John's Wood | 103-104 St John's Wood Terrace, London NW8 6PL
020 7586 7001 | stjohnswood@winkworth.co.uk

winkworth.co.uk/st-johns-wood

Winkworth

See things differently.