



**LOVETT**  
Sales & Lettings

£325,000



## 2 Abbey Fields, Ramsey, Huntingdon, PE26 1TG

- DETACHED BUNGALOW
- THREE BEDROOMS
- GARAGE AND DRIVEWAY
- CONSERVATORY
- EN-SUITE TO MASTER BEDROOM
- CLOSE TO TOWN CENTRE



## Full Description

Located within the popular historic market town of Ramsey, this three-bedroom detached bungalow is just a short walk away from everything the town has to offer. As you enter the property you will find a good-sized entrance hall, which leads on into the spacious lounge/diner and kitchen. Just down the hall is the family bathroom, two double bedrooms and one single bedroom. The master bedroom benefits from having fitted wardrobes, an En-suite and views overlooking the garden. The conservatory to the rear of the property offers access to the low maintenance large corner plot garden which is mainly laid to gravel and has multiple patio areas. To the front of the property is a small front garden which is mainly laid to gravel and leads to the garage and driveway. The property is offered to the market with no forward chain.

### ENTRANCE HALL

UPVC entrance door leading to entrance hall. Doors to lounge/diner, kitchen, bedrooms and shower room. Alarm panel. Airing cupboard housing hot water cylinder. Radiator.

### LOUNGE/DINER

19' 5" x 11' 9" (5.92m x 3.58m)

UPVC window to front. UPVC sliding doors to conservatory. Feature fireplace with stone surround. TV and telephone point. Radiator.

### KITCHEN

11' 7" x 9' 6" (3.53m x 2.9m)

Fitted kitchen comprising work surfaces with drawers and cupboards under. Wall mounted cupboards. One and a half bowl sink with mixer taps and tiled splash backs. Cupboard housing gas boiler. Two built in Bosch ovens and four ring electric hob with extractor fan over. Built in fridge/freezer and dishwasher. UPVC windows and door to conservatory.

### CONSERVATORY

16' 7" x 7' 5" (5.05m x 2.26m)

Brick and UPVC constructed conservatory with two UPVC doors to garden. Radiator plus additional electric heater. Doors to lounge/diner and kitchen.

### BEDROOM ONE

12' 8" x 11' 5" (3.86m x 3.48m)

UPVC window to rear. Fitted wardrobes with mirrored doors. Built in cupboard. Radiator. Door to en-suite.



### EN-SUITE

Three piece suite comprising low level WC, pedestal wash hand basin and fitted shower unit with glass door and tiled splash backs. Radiator. Shaver sockets. Extractor fan. UPVC window to side.

### BEDROOM TWO

11' 8" x 10' 7" (3.56m x 3.23m)

UPVC window to front. Built in cupboard. Fitted wardrobes and drawers. Radiator.

### BEDROOM THREE

8' 4" x 7' 6" (2.54m x 2.29m)

UPVC window to side. Radiator.

### SHOWER ROOM

Three piece suite comprising low level WC, pedestal wash hand basin and fitted double shower unit with glass sliding doors. Tiled splash backs. Radiator. Extractor fan.

### FRONT GARDEN

Mainly laid to gravel with driveway leading to garage. Mature shrubs and trees.

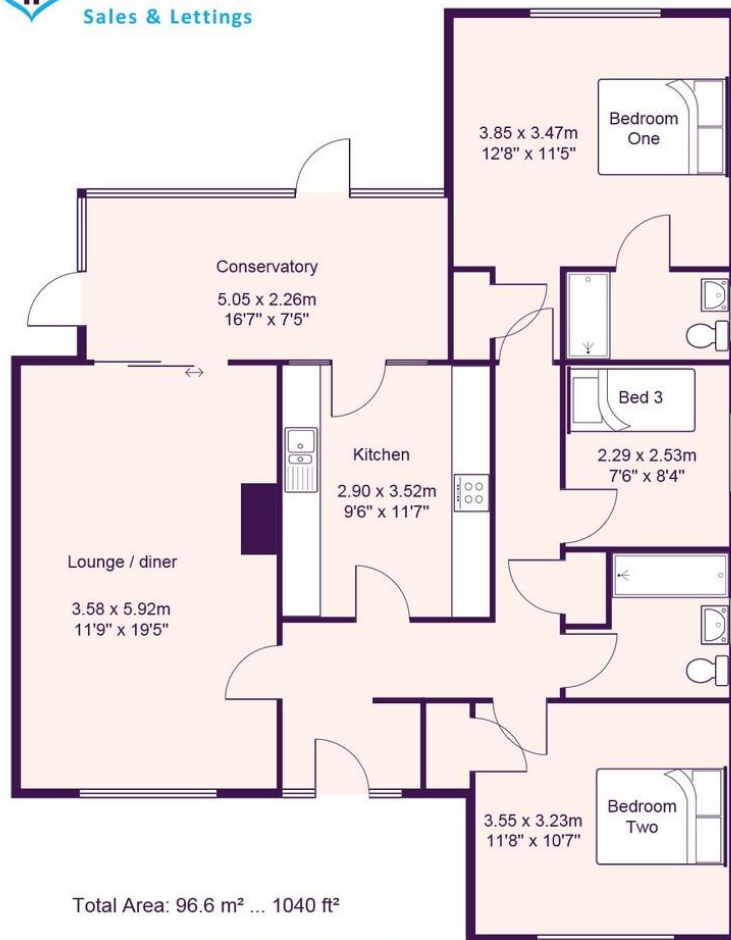
### REAR GARDEN

Low maintenance corner plot rear garden mainly laid to gravel with flower and shrub borders. Patio areas. outside water supply. Outside light. Door into garage. Garden sheds.

### GARAGE

Single garage with electric metal up and over door. Power and light. Personal door to side.





### EPC GRAPH

